

WHEELING PARK DISTRICT

1.



**WHEELING  
PARK  
DISTRICT**



## HISTORY OF THE WHEELING PARK DISTRICT

A group of interested citizens petitioned the County Clerk for authorization to hold an election to create a park district in the village of Wheeling, Cook County, Illinois. This was granted and an election was held in January of 1961, for the purpose to elect five commissioners and the formation of a park district.

The organizational meeting was held January 11th, 1961 at the Village Hall. The terms of each Commissioner was chosen as follows: Theodore C. Scanlon, 6 years, Arthur E. Aronson, 6 years, Ralph F. Neubauer, 4 years, Arthur L. Brown, 4 years, Audrea Duke, 2 years. Mr. Brown was elected President and Roger A. Bjorvik was appointed Attorney Secretary and Treasurer at the salary of \$400.00 for each office per year. There being no monies available, the Board approved to sign a note with the Wheeling Junior Women's Club for the amount of \$200.00 to pay for the election.

On March 16, 1961, Eugene Sackett was hired as a part time Superintendent for the amount of \$1,200.00 per year. In June of 1961 T. Scanlon resigned and was replaced by Mr. Richard Ault.

Inasmuch as there were no funds available, the park district took out Tax Anticipation Warrants in the amounts of \$6,000.00 in July and \$2,000.00 in December. There being no land in the holding of the park district, the programs were held in the various schools and on the playgrounds of School District #21.

Arthur Brown resigned in July 1961 and was replaced by Raymond Hammond the following October. Audrae Duke was then elected President.

In the early part of August 1961, there was quite a lengthy discussion relative to three lots on Nancy Lane which had been deeded over to the Village. The park board approached the Village to request them to relinquish title and turn the land over to the park district. This became a reality in March of 1962. There had been discussions regarding flood control in 1961 but to date nothing had been done.

Mr. Ralph Neubauer resigned in October of 1961 and was replaced by Mr. Donzella in November of that year. It was agreed if the park board desired use of the schools on weekends, the sum of \$2.25 per hour was paid for the custodial services.

1962. The park district's first ice pond was located at Chamber Park. A lease arrangement was made with the Wheeling Community Pool Committee to use the building and grounds. Flooder's were paid \$2.25 per hour and attendants \$1.50 per hour. Recreation help was paid \$1.00 per hour. Victor Baumgart made up the first audit for the fee of \$100.00. In July 1962, the Meadowbrook Women's Club and Alice Lockwood donated their \$100.00 pool bond to the park district.

1963. In May of 1963, the Wheeling Junior Chamber of Commerce approached the park board if they had any land available. If so, the Junior Chamber of Commerce wanted to build a youth building 60 X 100 for the sum of \$18,000.00.

The park district made an inquiry to the Searle property in July and were told the land was available for sale. The parcel contained 76.3 acres @ \$ 3,100.00 per acre totaling \$236,500.00. No action was taken at this time.

In September 1963 Ralph Burke Company was hired to make a study of the community relative to park sites and other needs. Lights were installed at the ice rink located at Chamber Park in August for the amount of \$502.00.

A request was made by the residents in the western part of Wheeling for a park in their area. The park district then leased two lots from the Wheeling Library board.

During the Family Fair in which the park district participated, a poll was taken for the proposed park site known as the "Searle property." The feelings of the residents was then known as the ballots casted showed 132 for, 17 against and 11 spoiled. The Burke study resulted in the following recommendation for proposed park sites: 7 acres in Holland Subdivision, 5 acres South



of Jack London School site and 5 acres adjacent to the Wheeling Community pool.

In September of 1963, the board approved the expenditure of \$600.00 for playground equipment for the Nancy Lane park site known as "Meadowbrook Park." The first piece of park equipment purchased for the park district was a typewriter for the amount of \$50.00. In November of 1963, an agreement was signed between the School District and the Park District relative to the use of School facilities and property.

Arthur Aronson resigned and was replaced by Joseph Harrison in December of 1963.

A question arose relative to the Commonwealth Edison property which runs parallel to the railroad tracks. Through investigation, the park board entered into a lease arrangement for said area running from Dundee Road to Wheeling Road. The amount of \$25.00 per year was paid by the park district for the use of 13.1899 acres.

1964. In March 1964 the park district held an election for a referendum in order to purchase property, the building of a fieldhouse, and to improve some school sites. The breakdown of the improvements and land acquisition are as follows: purchase of the Searle Tract \$236,500.00, the building of a fieldhouse and improvements, \$450,500.00, the North Central Tract improvements known as the Adler property to be purchased for the amount of \$42,000.00, and the South West Tract known as the Miller property to be purchased for \$30,500.00. This resulted in a bond issue in the amount of \$583,000.00. The ballots casted showed 384 yes, 254 no, and 11 spoiled.

Also in 1964 the Nany presented the park district with a used airplane which was placed on the Meadowbrook park site. Superintendent Sackett was appointed for another year at the amount of \$2,100.00 and \$150.00 car allowance. Mr. Bjorvik was again appointed Attorney at \$600.00 per year, Treasurer at \$750.00 per year and Secretary at \$600.00 per year.

759,500  
500  
1765

A theatre group known as the Wheeling Park Players requested the park board to sponsor them. This was denied. Husky Park was purchased in June of 1964 for the sum of \$17,000.00 for five acres. In November the park board expended the amount of \$300.00 for the purchase of trees at Meadowbrook Park. The bonds were sold in November to Barcus Kindred at the interest rate of 3.34989%. In February of 1964 Joseph Harrison resigned and was replaced by Mr. Harry Thill in March.

1965. At the April election, Richard Ault and Bernard Erlin were elected for 6 year terms. Lorraine Gueck was appointed Board Secretary to be paid the amount of \$15.00 per meeting. The resignation of Mr. Bjorvik was accepted.

In July of 1964 , the purchase of office equipment was made, a file cabinet \$150.00, a bleacher \$150.00 and an adding machine was purchased in September for \$79.50. The first Ordinance containing Regulations and Restrictions was passed in October of 1964. The first donation given to the park district was received from the J.C. Jills in the amount of \$50.00. In July 1965 the Misdemeanors Ordinance was drawn up and all park help was commissioned park police. In August 1965 Roger Bjorvik relinquished the office of Treasurer and Mr. William F. Blank was appointed at a token salary of \$600.00 per year. The Commonwealth Edison Lease was terminated. Eight park benches were purchased for the sum of \$264.00. An easement 5 feet wide was purchased for a walkway to Husky Park from Anthony Road at the amount of \$1,500.00. A contest was held to name the new park site. Sixty four ballots were cast. Twenty Nine were for the name Heritage Park thus giving the park its name.

1966. In February 1966, an Administration Ordinance was approved. The Wheeling Park District entered into a lease with the Community Pool Corp. to operate the pool for the summer of 1966. Negotiations were started for the North Side Park. In May Charles Gaut was hired as supervisor of buildings and grounds at the salary of \$1,800.00 per year.

The park district installed playground equipment at Mark Twain, Eugene Field, Carl Sandburg and Walt Whitman school sites. Eugene Sackett was appointed Recording Secretary. In June 1966 the Park District leased the Chamber Park with the understanding the Chamber would not spend any money. The Park District expended the amount of \$500.00 for black dirt and the leveling out of same. The Family Fair held in September was the first public function to take place at Heritage Park. Ferdinand Arndt was hired September 15, 1966 as the first full time Superintendent of Parks and Recreation.

On Sunday November 23, 1966 Heritage Park was officially dedicated. Ann Egan was hired as part time office secretary. The first park district motorized equipment purchased was an International truck and tractor. The park district started participation in the Illinois Municipal Retirement Fund which is a pension fund for all full time employees or any employee working 600 hours or more.

1967. February 1967, Mr. Gene Hicks and a group of interested citizens presented a drawing of a monument to be erected at the southwest corner of the frontage of Heritage Park, which was approved by the park board. In March specs were sent out for bids relative to making a manmade lake to be used for recreation programs at Husky Park. The low bidder Milburn Bros. was \$11,542.50. A builder had agreed to donate \$7,000.00 for this project. The Village was opposed to this project and stated they would stop it if the park district decided to go through with it. A flag pole was installed for \$430.00

In April 1967, an election was held and Mrs. Lorraine Lark and Mr. Alf Wilson were elected to the board to fill the offices of Clayton Weider, and Harry Thill. On May 1, 1967, Patricia Hancock was hired as the first full time park secretary. In June Audry Christiansen and Ferdinand Arndt were guests of School District #21 to attend and review the Mott Foundation in Flint Michigan. This was the start of the Torch program.



A tobaggan hill was built in June of 1967 at no cost to the park district. The Drainage District removed the dead trees along the creek at Heritage Park. In the month of July a fee for the use of building and other facilities was adopted. Richard Ault resigned.

Through the good relations with the Village, they consented to sell the park district gasoline at cost.

In September 1967, playground equipment and trees were placed at Heritage Park and Mark Twain School Site. Mr. Robert Ross was appointed to fill the unexpired term of Richard Ault. The Village had a street light installed at the entrance to Heritage Park and Holmes School.

A three inch Homelite pump was purchased in order that the park district could pump water out of the creek for an iceskating rink, at the cost of \$504.00. A fence was installed around the ice rink as there was an admission charged for iceskating. The cost of the fence was \$2,480.00.

In December of 1967, there being a need for more recreation programs, the park board held an election on December 19 requesting the taxpayer to approve a tax to be levied for recreation. The vote resulted as 114 yes, and 113 no.

1968 . In January 1968, a piece of property known as Jeanne Terrace was purchased for an ingress and egress to the park. This was purchased for the amount of \$4,500.00. In May, Mr. Keith Vernon was hired as a part time recreation director by an agreement made with School District #21. The parking lot and the walk back to the monument located at Heritage Park was blacktopped, for the sum of \$3,045.00 A light was placed on the west end of the building in order to light the walk over the bridge. A second baseball diamond was installed. Lloyd Hubbard was hired to make a pool survey for the Wheeling Park District.

In August, the Wheeling High Spur Club put up lights for the football field and the park district contributed \$3,000.00 for lights on the tennis courts in order this work could all be done at the same time.

In September 1968, the park district was interested in purchasing the outdoor pool. The firm of McFadsen and Everly was hired to appraise same and present their recommendations to the board, relative to improvements and surrounding buildings. A design for Chamber Park was also presented to the park board.

A broom to be mounted on a tractor was purchased for sweeping the ice rinks at the cost of \$685.00. Ann Egan resigned.

1969. Two sets of bleachers were purchased for the ball diamond at Heritage Park.

The Wheeling Park District having no ensignia, held an emblem contest.

The emblem you see the district using was designed by Mary Lang.

In April, 1969 Mr. Eugene Sackett was elected to replace Audrey Christiansen. An offer was made in May for the Chamber Park and after a few meetings the park was purchased for the amount of \$15,000.00 which was to be paid over a 5 year period, also with the understanding that the name would remain Chamber Park.

In June 1969, the park district was interested in the purchase of the outdoor pool and the building of an indoor pool, which would be adjacent to the Wheeling High School. After the preliminaries were worked out, the board agreed to hold a referendum for \$850,000.00. This referendum was held on June 14, 1969 and passed. The Park Board authorized Orput and Orput Associates to make up the working plans.

The park board approved hospitalization insurance for all full time employees, the district to pay same. A new chlorinator had to be purchased in order to open the outdoor pool.

In July 1969, Orput and Orput prepared the specs for bidding on the building and indoor pool. In August the bonds were sold to Hornblower and Weeks, the interest rate being 6.94%.

September, easements were given the Village for Husky and Heritage Park

in order to start work on the retention basins. There were two easements on the high school property for public utilities.

In November 1969, bids were opened on the pool and building. The second low bidder was Ragnar and Olson and upon recommendation of Orput and Orput, they were awarded the bid at \$658,000.00. The outdoor pool was purchased for the amount of \$160,000.00. An ice shelter was built adjacent to the ice rink at Heritage Park which would also be used in the summers for programs.

1970. In January 1970, the Wheeling Historical Society requested the park district to help preserve an old church building which was built in 1865 and place it on one of the park sites. The board agreed to do so but found no funds available. The park district took out a \$20,000.00 loan in order the movers could be paid, a foundation be built and the building be rehabilitated as you see it today. The Presbyterian Youth Group scraped and painted the building and some of the articles were donated. The park district received a bill of sale for \$10.00 from the Historical Society which now made this building a part of the districts holdings.

In February 1970, a garage was donated to the park district by a resident. While in the process of being moved, the second morning it was found to be burnt to the ground. Work on the far west retention basin was finished except for the fine grading and seeding. In March, the board agreed the extreme western part of Heritage Park could be used as a heliport in an extreme emergency only. An easement was granted to Illinois Bell Telephone Company on the south boundary line of Heritage Park.

In June 1970, Mr. Marshall Balling addressed the park board in behalf of the Historical Society to have the park board give consideration to having the Soo Line Depot moved on park property. Request denied.

The Park District employed the services of Illinois Counties Detective Agency as a security measure for park property. Bids were received for the purpose of black topping of the parking lot and road which enters Chamber Park.

9.  
The low bid was presented by Harding Paving, the amount of \$5,626.00. The board approved the road and a small parking area in the amount of \$4,556.00. In June, the Northside park was purchased for the amount of \$50,279.73. The wooden light poles were taken down at Chamber Park at no cost to the district. Twenty fir trees were purchased for Chamber Park.

In August 1970, Raymond Kittendorf was hired as Aquatic Director for the new indoor pool. On July 16, 1970, the Misdemeanor and Administrative Ordinance was adopted and ordered to be placed in book form.

In August 1970, Mr. F. Hilman and A. Zale approached the park board to relinquish the J.S. 14 site in their development and agreed to give the park district the amount of \$700.00 each, totaling \$1,500.00. To date no monies have been received. A communication base was set up in the Superintendent's office at the cost of \$509.05 for use of the Illinois Counties Detective Agency.

In October two sentrys were installed and new wires pulled at the outdoor pool. The church dedication was held October 28, 1970. Pictures were shown relative to the moving of the building.

1971. Tarkington School was a new site for an ice rink. In May the board approved uniforms for all full time maintenance help. A seven gang Thor Park Master mower was purchased from the Mundelein Park District for the sum of \$5,000.00. This equipment sold new for \$11,000.00. There was a great need for this equipment as the acreage for mowing has increased.

In June, it was suggested that the park district map be updated showing the boundaries and to include all annexations. Heritage Parking lot was extended 200 feet. The cost of grading and gravel was not to exceed \$1,600.00.

A request was received from Holmes Jr. High for the park district to install two basketball backstops and two tether ball standards. This request was approved.

In August, a proposal was presented to the board to build a fireplace in the ice shelter at the cost of \$1,578.00. No action was taken. Goal posts for football were placed at Twain, Sandberg sites and Heritage Park.



In September 1971 at the close of the swimming season, a fishing event was held at the outdoor pool. This was a huge success. The Drum and Bugle Corp. approached the park board requesting use of Heritage Park for every Tuesday evening, in return they will build an extension on the garage. This was approved to the point that work could not be started until all materials were on site. A television set and antenna was installed to show the blacked out sporting events. The cost of this equipment was \$1,350.00.

In a response to a letter written Tekton Corp. regarding a financial contribution to the park district to develop a park area in the near future, Tekton Corp. presented the park district with a check for \$2,500.00 and with a promise of another \$2,500.00 when their final occupancy permit is issued.

Mr. Mel Lange donated three trees to the park district which were moved and placed at Chamber park. In October 1971, the board approved a flood light to be placed at the entrance of Neptune Pool. An easement was granted to Wicks Corporation to run excess water from their property into the Heritage Park retention basin provided this was approved by the Metropolitan Sanitary District. The park board approved the purchase of material to build a hockey rink to be located on the ball diamond at Heritage Park.

In December, a check was received by the park district in the amount of \$922.66 from a group of students and teacher from Jack London Jr. High School for the purpose of landscaping a garden at Chamber Park. This money was raised through a marathon held by these students.

1972. In January 1972 Mr. Bruce Coleman resigned as Recreation Director and was replaced by Mr. David Phillips.



In 1973 the Village of Wheeling developed plans to construct a well pumping station on the site where the old Village Hall stood. During the periods of 1973 - 1975, the Wheeling Historical Society worked with the Village of Wheeling to try and select another site for the old Village Hall, but the Village of Wheeling did not have available land to relocate this building, and they could not sell it to the Historical Society because a public agency could not sell a building to a private organization such as the Historical Society.

Shortly after the Wheeling Historical Society discovered that they could not purchase the Museum Building, they decided to ask the Wheeling Park District, (being a public Agency) to purchase the building from the Village of Wheeling, and to accept ownership with the understanding that:

- A. The Wheeling Park District could levy a Historical Tax.
- B. Take over the responsibilities of building an addition and relocating the building to Chamber of Commerce Park.
- C. Allowing the Wheeling Historical Society to continue to operate this Facility.

On August 8, 1978, the Wheeling Park District purchased the Museum Building from the Village of Wheeling for a cost of one dollar (\$1.00).

In the Fall of 1977, the Director of Parks of the wheeling Park District began preparations for the relocation of the Museum. A model of the Museum and addition were built, drawing made representing construction, landscape plans developed and a cost estimate for the relocation and renovation of the building.

In September of 1978, the Museum Building was relocated to Chamber of Commerce Park and placed on the Northwest Corner of the Park. Grant House Razing Company, from Addison, Illinois, was retained to move the building.

In October of 1978 work had begun on the renovation and construction of the new addition and basement for the Museum. Director of Parks, John Piazza acted as General Contractor for this project, to help reduce the total cost of the project.

In August of 1979, all renovation and construction work for the Museum Building had been completed. The total project cost was \$77,668.64.

On March 8, 1979, at a regularly scheduled Wheeling Historical Society Meeting, the membership agreed upon the name submitted by the Wheeling Historical Society Board, The Wheeling Historical Museum.

In April of 1980, at our Arbor Day Celebration, all landscaping around the Museum was installed. This was a community event.

In May of 1980, the Museum Building was dedicated to the residents of Wheeling at a public ceremony.

It was agreed by both the Wheeling Park District and the Wheeling Historical Society that the Museum would be operated by the Wheeling Historical Society and that they would be responsible for the contents of the building.

The Wheeling Historical Museum is presently open to the public on Sundays from 2:00 - 4:00 p.m. and for special interest groups during the week by appointment.

THE HISTORY OF  
WHEELING PARK DISTRICT  
1960 - 1986

BY

P. Hancock  
Secretary to Superintendent  
Recording Secretary to the Board  
of Park Commissioners  
Director of Support Services  
1967 - 1986

At the request of the Board of Park Commissioners in 1986, I was asked to put together a history of our park district up until, and including it's twenty five years of service. To the best of my ability, I have tried to put the story together with pictures and news clippings which are contained in three albums. There are also four more albums for you to view of news pictures and articles located in the lower level of the Wheeling Historical Museum.

I hope this history provides you some insight of how and where we started and how far we have come because of the service given by the present and past commissioners and and their staffs since the inception of the Wheeling Park District.

**ANNIVERSARY**

**25**

**CELEBRATION**

**YEARS  
OF**

**GROWTH AND  
COMMUNITY  
SERVICE**

**1961**



***WHEELING  
PARK  
DISTRICT***

**1986**

**WINTER**

**SPRING**



# DID YOU KNOW?

## WHEELING PARK DISTRICT TWENTY FIVE YEARS OF SERVICE

Did you know that January of 1986 marks the 25th Anniversary of the formation of the Wheeling Park District?

Initiated by a group of interested citizens, the County Clerk was petitioned for an election to form a Park District and elect a governing Board of Park Commissioners in January of 1961. That citizen involvement and desire to provide the community with park land, recreation facilities and programs was the beginning of the development of the Wheeling Park District. That citizen initiation and involvement remains the strength of the Wheeling Park District today.

The following is a brief history of the important dates in the acquisition and development of the Wheeling Park District properties and facilities.

- June, 1961— Initial programs and activities of the Wheeling Park District conducted in various School District #21 schools and playgrounds, due to no land or facilities owned by the Wheeling Park District.
- March, 1962— Meadowbrook Tot Lot, a ½ acre neighborhood playground park site purchased.
- March, 1964— Successful referendum passed to build a recreation fieldhouse and purchase 66 acres of park land known as Heritage Park.
- June, 1964— Purchase of a 5 acre park site known as Husky Park.
- May, 1966— Purchase and installation of original playground equipment at school sites.
- December, 1967— Successful election authorizing a tax levy for recreation programs.
- April, 1969— Purchase of Chamber Park.
- June, 1969— Successful referendum to fund the construction of Neptune's Indoor Pool and the purchase of the Chamber Park Community Outdoor Pool.
- November, 1969— Community Outdoor Pool purchased from Wheeling Community Pool Committee.
- June, 1970— Purchase of Northside Park.
- December, 1972— Successful referendum to purchase Horizon Park and further develop park and school sites.
- March, 1977— Successful referendum to purchase Chevy Chase Clubhouse and Golf Course and Childerley Park.
- October, 1978— Wheeling Park District receives the National Gold Medal Award recognizing it as the nation's outstanding park and recreation agency.
- January, 1984— State Grant approved for the purchase and development of Horizon Park.

As you can see, the Wheeling Park District has grown and developed tremendously in size and quality since its formation in 1961. This growth and progress is primarily due to a community that is involved, supportive, and takes pride in its accomplishments, while holding out even higher expectations.

The 25th Anniversary of the Wheeling Park District is a reminder that the Park District has an established history, and that we are building on that history for our next 25 years of service.

**Thank you for participating in our events!**  
**Please continue to do so!**



WHEELING PARK DISTRICT  
HISTORY  
"IN THE BEGINNING"

A group of interested citizens petitioned the County Clerk for authorization to hold an election to create a park district in the Village of Wheeling, Cook County, Illinois in 1960. This was granted and an election was held in January of 1961, for the purpose to elect five commissioners and the formation of a park district.

The organizational meeting was held January 11th, 1961 at the Village Hall. The terms of each Commissioner was chosen and are as follows: Theodore C. Scanlon, 6 years, Arthur E. Aronson, 6 years, Ralph F. Neubauer, 4 years, Arthur L. Brown, 4 years, Audrea Duke, 2 years. Mr. Brown was elected President and Roger A. Bjorvik was appointed Attorney, Secretary and Treasurer at at the salary of \$400.00 for each office per year. There being no monies available, the Board approved to sign a note with the Wheeling Junior Women's Club for the amount of \$200.00 to pay for the election.

On March 16, 1961, Eugene Sackett was hired as a part time Superintendent for the amount of \$1,200.00 per year. In June of 1961, T. Scanlon resigned and was replaced by Mr. Richard Ault.

Inasmuch as there were no funds available, the park district took out Tax Anticipation Warrants in the amounts of \$6,000.00 in July and \$2,000.00 in December. There being no land in the holding of the park district, the programs were held in the various schools and on the playgrounds of School District #21.

Arthur Brown resigned in July 1961 and was replaced by Raymond Hammond the following October. Audrae Duke was elected President.

In the early part of August 1961, there was quite lengthly discussions relative to three lots on Nancy Lane which had been deeded over to the village. The park board approached the village to request them to relinquish title and turn the land over to the park district. This became a reality in March of 1962. There had been discussions regarding flood control in 1961 but nothing has been done.

Mr. Ralph Neubauer resigned in October of 1961 and was replaced by Mr. Donzella in November of that year. It was agreed if the park board desired use of schools on weekends, the sum of \$2.25 per hour was paid to their employees for the custodial services rendered.

In 1962, the park district's first ice pond was located at Chamber Park. A lease arrangement was made with the Wheeling Community Pool Committee to use the building and grounds. Flooder's were paid \$2.25 per hour and attendants \$1.50 per hour. Recreation help was paid \$1.00 per hour. Victor Baumgart made up the first audit for the fee of \$100.00. In July 1962, the Meadowbrook Women's Club and Alice Lockwood donated their \$100.00 pool bond to the park district. In March of 62, Meadowbrook Tot Lot, a 1/2 acre neighborhood park was purchased. In May of 1963, the Wheeling Junior Chamber of Commerce approached the park board if they had any land available. If so, the Junior Chamber of Commerce wanted to build a youth building 60 x 100, for the sum of \$18,000.00.

The park district made an inquiry to the Searle property in July and were told the land was available for sale. The parcel contained 76.3 acres at \$3,100.00 per acre, totaling \$236,500.00. No action was taken.

In September of 1963 Ralph Burke Company was hired to make a study of the community relative to park sites and other needs. Lights were installed at the ice rink located at Chamber Park in August for the amount of \$502.00. A request was made by the residents in the western part of Wheeling for a park in their area. The park district then leased two lots from the Wheeling Library Board.

During the Family Fair in which the park district participated, a poll was taken for the proposed park site known as the "Searle Property." The feelings of the residents was then known as the ballots casted showed 132 for, 17 against and 11 spoiled. The Burke study resulted in the following recommendation for the proposed park sites: 7 acres in Holland Subdivision, 5 acres south of Jack London School site and 5 acres adjacent to the Wheeling Community Pool.

In September of 1963, the board approved the expenditure of \$600.00 for playground equipment for the Nancy Lane park site known as "Meadowbrook Park". The first piece of park equipment purchased for the park district was a typewriter for the amount of \$50.00. In November of 1963, an agreement was signed between School District #21 and the Park District relative to the use of school facilities and property.

Arthur Aronson resigned and was replaced by Joseph Harrison in December of 1963.

A question arose relative to the Commonwealth Edison property which runs parallel to the railroad tracks. Through investi-

gation the park board entered into a lease arrangement for said area running from Dundee Road to Wheeling Road. The amount of \$25.00 per year was paid by the park district for use of 13,189 acres.

In March 1964, the park district held an election for a referendum in order to purchase property, the building of a fieldhouse and to improve some school sites. The breakdown of the improvements and land acquisition are as follows: purchase of the Searle Tract \$236,000.00, the building of a fieldhouse and improvements, \$450,500.00, the North Central tract improvements known as the Adler property to be purchased for the amount of \$42,000.00, and the southwest tract known as the Miller property to be purchased for \$30,500.00. This resulted in a bond issue in the amount of \$583,000.00. The ballots casted showed 384 yes, 254 no, and 11 spoiled.

Also in 1964 the Navy presented the park district with a used airplane which was placed on the Meadowbrook park site. Superintendent Sackett was appointed for another year at the amount of \$2,000.00 and \$150.00 car allowance. Mr. Bjorvik was again appointed Attorney at \$600.00 per year, Treasurer at \$750.00 per year and Secretary at \$600.00 per year.

A theatre group known as the Wheeling Park Players requested the park board to sponsor them. Husky Park was purchased in June of 1964 for the sum of \$17,000.00 for 5 acres. In November, the park board expended the amount of \$300.00 for the purchase of trees at Meadowbrook Park. The bonds were sold in November to Barcus Kindred at the interest rate of 3.34989%. In February of 1964 Joseph Harrison resigned and was replaced by Mr. Harry Thill in March.

In 1965 at the April election, Richard Ault and Bernard Erlin were elected for 6 year terms. Lorraine Gueck was appointed Board Secretary to be paid the amount of \$15.00 per meeting. The resignation of Secretary by Mr. Bjorvik, was accepted.

In June of 64, Husky Park, a 5 acre site was purchased. In July of 1964, the purchase of office equipment was made, a file cabinet \$150.00, a bleacher \$150.00. An adding machine was purchased in September for \$79.00. The first Ordinance containing Regulations and Restrictions was passed in October of 1964. The first donation given to the park district was received from the J.C. Jills in the amount of \$50.00.

In July 1965, the Misdemeanors Ordinance was drawn up and all park employees were commissioned park police. In August 1965



Roger Bjorvik relinquished the office of Treasurer and Mr. William F. Blank was appointed at a token salary of \$600.00 per year. The Commonwealth Edison Lease was terminated. Eight park benches were purchased for the sum of \$264.00. An easement 5 foot wide was purchased for a walkway to Husky Park from Anthony Road at the amount of \$1,500.00. A contest was held to name the new park site on the Searle property. Sixty four ballots were cast. Twenty Nine were for the name of Heritage Park thus giving the park its' name.

In February, 1966 an Administrative Ordinance was approved. The Wheeling Park District entered into a lease with the Community Pool Corporation to operate the pool for the summer of 1966. Negotiations were started for the North Side Park. In May, Charles Gaut was hired as supervisor of buildings and grounds at the salary of \$1,800.00 per year. The park district installed playground equipment at Mark Twain, Eugene Field, Carl Sandburg and Walt Whitman school sites. Eugene Sackett was appointed Recording Secretary. In June 1966 the Park District leased the Chamber Park with the understanding the Chamber would not spend any money. The Park District expended the amount of \$500.00 for black dirt and the leveling out of the site. The Family Fair held in September was the first public function to take place at Heritage Park. Ferdinand Arndt was hired September 15th, 1966 as the first full time Superintendent of Parks and Recreation.

On Sunday November 23, 1966 Heritage Park was officially dedicated. Anne Egan was hired as part time Office Secretary. The first park district motorized equipment purchased was an International truck and tractor. The park district started participation in the Illinois Municipal Retirement Fund which is a pension fund for all full time employees or any employee working 600 hours or more.

In February of 1967, Mr. Gene Hicks and a group of interested citizens presented a drawing of the monument dedicated to veterans of Wheeling, to be erected at the southwest corner of the frontage of Heritage Park. This was approved by the park board. In March specs were sent out for bids relative to establishing a man made lake to be used for recreational programs at Husky Park. The low bidder was Milburn Brothers at a cost of \$11,542.50. The builder had agreed to donate \$7,000.00 for this project but the Village was opposed and stated they would stop it if the park district decided to go through with it. A flag pole was installed for \$430.00. In April 1967, an election was held and Mrs. Lorraine Lark and Mr. Alf Wilson were elected to the board to fill the

offices of Clayton Weider and Harry Thill.

On May 1, 1967 Patricia Hancock was hired as the first full time Park Secretary. In June, Audrey Christiansen and Superintendent Ferdinand Arndt were guests of School District #21 to attend and review the Mott Foundation in Flint Michigan. This was the beginning of the Torch program.

A tobaggan hill was built in June of 1967 at no cost to the park district. The Drainage District removed the dead trees along the creek at Heritage Park. In the month of July, a fee for use of building and other facilities was adopted. Richard Ault resigned.

Through good relations with the village, they consented to sell the park district gasoline at cost.

In September 1967, playground equipment and trees were placed at Heritage Park and Mark Twain School site. Mr. Robert Ross was appointed to fill the unexpired term of Richard Ault. The village had a street light installed at the entrance of Heritage Park and Holmes School.

A three inch Homelite pump was purchased in order that the park district could pump water out of the creek for an ice-skating rink at a cost of \$504.00. A fence was installed around the ice rink as there was an admission charged for ice skating. The cost of the fence was \$2,480.00.

In December of 1967, there being a need for more recreation programs, the park board held an election on December 19th requesting the taxpayers to approve a tax to be levied for recreation. The vote resulted as 114 yes, and 113 no.

In January 1968, a piece of property known as Jeanne Terrace was purchased for an ingress and egress to the park. This was purchased for the amount of \$4,500.00. In May, Mr. Keith Vernon was hired as a part time Recreation Director through an agreement made with School District #21.

The parking lot and the walk back to the monument located at Heritage Park was blacktopped for the sum of \$3,045.00. A light was placed on the west end of the building in order to light the walk over the bridge. A second baseball diamond was installed. Lloyd Hubbard was hired to make a pool survey for the Wheeling Park District.

In August, the Wheeling Spur Club put up lights for the foot-



ball field and the park district contributed \$3,000.00 for lights on the tennis courts in order this work could all be done at the same time.

In September 1968, the park district was interested in purchasing the outdoor pool. The firm of McFadzen and Everly was hired to appraise and present their recommendation to the board relative to improvements of the pool and surrounding buildings. A design for Chamber Park was also presented to the park board.

A broom to be mounted on a tractor was purchased for sweeping the ice rinks at a cost of \$685.00. Ann Egan decided to resign but was asked to stay on as a part time employee.

In 1969 two sets of bleachers were purchased for the ball diamond at Heritage Park. The Wheeling Park District having no ensignia, held an emblem contest.

In April 1969, Mr. Eugene Sackett was elected to replace Audrey Christiansen. An offer was made in March for the Chamber Park and in April of 1969, the park was purchased for the amount of \$15,000.00 which was to be paid over a 5 year period, also with the understanding the name of "Chamber Park" would remain the same.

In June 1969, the park district was interested in the purchase of the outdoor pool and the building of an indoor pool which would be adjacent to the Wheeling High School. After the preliminaries were worked out, the board agreed to hold a referendum for \$850,000.00. This referendum was held on June 14, 1969 and passed. The Park Board authorized Orput and Orput Associates to make up the working plans.

The park board approved hospitalization insurance for all full time employees, with the district to pay full amount. A new chlorinator had to be purchased in order to open the out-door pool. In July 1969, Orput and Orput prepared the specifications for bidding on the building and indoor pool. In August the bonds were sold to Hornblower and Weeks, the interest rate being 6.94%.

September of 69, easements were given the Village for Husky and Heritage Park in order to start work on the retention basins. There were two easements on the high school property for public utilities.

In November 1969, bids were opened on the pool and building. The second low bidder was Ragnar and Olson and upon recommendation of Orput and Orput Associates, they were awarded the bid at \$658,000.00. The outdoor pool was purchased for the amount of \$160,000.00. An ice shelter was built adjacent to the ice rink at Heritage Park which would also be used in the summers for programs.

In January 1970, the Wheeling Historical Society requested the park district to help preserve an old church building which was built in 1865 and move it to one of the park sites. The board agreed to do so but found no funds available. The park district took out a \$20,000.00 loan in order to pay movers and to have a foundation built for the building to set upon and it remains there today at Chamber Park. The Presbyterian Youth Group scraped and painted the building and some of the items were donated. The park district received a bill of sale for \$10.00 from the Historical Society which now made this building a part of the park districts holdings.

In February 1970, a garage was donated to the park district by a resident. While in the process of being moved, the second morning it was found to be burnt to the ground. Work on the far west retention basin was finished except for the fine grading and seeding. In March, the board agreed the extreme western part of Heritage Park could be used as a heliport in an extreme emergency only. An easement was granted to Illinois Bell Telephone Company on the south boundary line of Heritage Park.

In June 1970, Mr. Balling addressed the park board in behalf of the Historical Society to have the park board give consideration to having the Soo Line depot moved on park property. This request was denied.

The Park District employed the services of Illinois Counties Detective Agency as a security measure for park property. Bids were received for the purpose of blacktopping of the parking lot and road which enters Chamber Park. The low bid was presented by Harding Paving in the amount of \$5,626.00. The board approved the road and a small parking area in the amount of \$4,556.00.

In June 1970, Northside Park was purchased for the amount of \$50,279.73 The wooden light poles were taken down at Chamber Park at no cost to the district. Twenty fir trees were purchased for Chamber Park. In August 1970, Raymond Kittendorf was hired as Aquatic Director for the new

indoor pool. On July 16, 1970 the Misdemeanor and Administrative Ordinance was adopted and directed to be put in book form.

In August, Mr. F. Hilman and A. Zale approached the park board to relinquish the J.S. 14 site in their development and agreed to give the park district the amount of \$700.00 each totaling \$1,500.00.

A communication base was set up in the Superintendents office at the cost of \$509.05 for use of the Illinois Counties Detective Agency.

In October, two sentrys were installed and new wires pulled at the outdoor pool. The church dedication was held October 28, 1970. Pictures were shown regarding the moving of the building.

In 1971, Tarkington School was a new site for an ice rink. In May the board approved uniforms for all full time maintenance employees. A used seven gang mower was purchased from the Mundelein Park District for the sum of \$5,000.00. New, this equipment would sell for \$11,000.00. There was a great need for this equipment as the acreage for mowing had increased. For use of the school sites for the summer park programs, it had been agreed upon that the park district maintain these areas.

In June, it was suggested the park district map be updated showing the boundaries and to include all annexations. Heritage parking lot was extended 200 feet. The cost of grading and gravel was not to exceed \$1,600.00.

A request was received from Holmes Jr. High School for the park district to install two basketball backstops and two tether ball standards. This request was granted.

In August, a proposal was presented to the board to build a fireplace in the ice shelter at the cost of \$1,578.00. This was done at a later date. Goal posts for football were placed at Twain, Sandburg and Heritage Park sites.

In September 1971 at the close of the swimming season, a fishing event was held at the outdoor pool which was a huge success. The Drum and Bugle Corp. approached the park board requesting use of Heritage Park for every Tuesday evening and in return they would build an extension on the garage.

This was approved to the point that work could not be started until all materials were on site. A television set and antenna was installed in the gym to show the blacked out sporting events. The cost of this equipment was \$1,350.00.

In response to a letter written to Tekton Corp, regarding a financial contribution to the park district to develop a park area in the near future, Tekton Corp. presented the park district with a check for \$2,500.00 with a promise of another \$2,500.00 when their final occupancy permit was issued.

Mr. Mel Lange donated three trees to the park district which placed at Chamber Park. In October 1971, the board approved a flood light to be placed at the entrance of Neptune Pool. An easement was granted to Wickes Corporation to run excess water from their property overland into the Heritage Park retention basin provided this was approved by the Metropolitan Sanitary District. The board approved the purchase of material to build a hockey rink to be located on the ball diamond at Heritage Park.

In December, a check was received by the park district in the amount of \$922.66 from a group of students and teacher from Jack London Jr. High School for the purpose of landscaping a garden at Chamber Park. This money was raised through a marathon held by these students.

In January of 1972, Mr. Bruce Coleman resigned as Recreation Director and was replaced by Mr. Dave Phillips. Mr. Dave Phillips served as Recreation Director under Superintendent Arndt until 1976 when he became Superintendent at the recommendation of Mr. Arndt who decided to retire.

In December of 1972, a successful referendum was held to purchase Horizon Park and to further develop park and school sites.

On March, 1977 a successful referendum to purchase Chevy Chase Country Club and Golf Course and also Childerley Park was held and passed with 4.1 margin. The good people of Wheeling Park District decided to preserve the open space rather than to see more condo's or townhouses being built. Staff moved up to Chevy Chase in 1978 in order that Heritage Park be fully utilized for the purpose of recreation staff and programs.



Much work and renovation was done a Chevy Chase in which not only staff participated, but the Board members as well. We scraped, painted ripped up and whatever it took to make Chevy Chase presentable to the public.

Following in October of 1978, the Wheeling Park District received the National Gold Medal Award, recognizing the park district as the nation's outstanding Park and Recreation Agency.

A State Grant for the development of Horizon Park was received in January of 1984. With these monies Horizon Park was transferred into an area containing base-ball diamonds, and concession area where programs could be held and many sports could take place.

" As you can see, the Wheeling Park District has grown and developed tremendously in size and quality since its formation in 1961. This growth and progress is primarily due to a community that was involved, supportive and takes pride in its accomplishments, while holding out even higher expectations.

The 25th Anniversary of the Wheeling Park District is a reminder that the Park District has an established history, and that we are building on that history for the next twenty-five years of service."

David F. Phillips  
Superintendent



January 26, 1961

Mrs. Donald Swanson  
Wheeling Woman's Club  
336 S. Sunset Lane  
Wheeling, Illinois

Dear Mrs. Swanson:

The Commissioners of the newly organized Wheeling Park District extend to the Wheeling Woman's Club their sincere appreciation for the excellent support received during the period the Park District was being organized.

The obligation in the amount of \$200.00 incurred by the Steering Committee has been assumed by the Park District and payment will be forthcoming as soon as tax funds are available.

We trust that our activity will benefit our neighbors and make Wheeling a better community.

Sincerely,

*Roger A. Bjorvik*

ROGER A. BJORVIK, Secretary

## WHEELING PARK DISTRICT

Three years ago the Wheeling Park District was nothing but wishful thinking on the part of a few interested people. December 23, 1961, the Wheeling Park District celebrated its first birthday. The celebration was one that culminated not only the active infancy of the park district, but the almost 2 years of groundwork that went into the organization of the municipality.

A village board-appointed steering committee began the process of park district organization in January, 1959. During the 1½ year period of planning and organization, the 11-man, 1-woman committee diminished to a 2-man, 1-woman steering committee (a representative of the school board, homeowners' group and Wheeling Jr. Women's club). Those people actively engaged in the committee at the beginning soon tired of the long and unglamorous process of complete and adequate preparation.

Forming a park district in Wheeling involved more than the usual 100 signatures on a petition for referendum and a vote of the people, required by Illinois statutes. In Wheeling the steering committee was confronted with the necessity of first disconnecting from the Rural Park District, an obstructive body formed as a large land-holders' protection against the establishment of a functioning and operative district before subdivision of the area. To disconnect the 900-acre tract required the signatures of 51 percent of the residents and the signatures of the owners of record of 51 percent of the land area.

The necessity for public education was a prime requisite to the completion of any phase of the organizational program. People had to be "sold" on the idea of a park district before they could be even receptive to the complicated process of disconnection from the Rural Park District and organization of the Wheeling Park District.

The educational program of the organization was conducted in 6 phases:

1. Stimulate interest in obtaining a park district.
2. Clarify public opinion as to the functions of a park district -- people realized they were residing in a recreational vacuum, but were uninformed as to the recreation potential of a functioning park district -- in their minds, park districts were associated with open lands and physical parks, the necessity of which is somewhat alleviated in this area by the proximity of the forest preserves forming the Eastern border of town.
3. Information as to the taxes being paid by community residents to maintain the obstructive and unproductive Rural Park District.
4. Procedural for disconnection.
5. Provide specific and basic information to prepare the public for park district formation.
6. Get out the vote for referendum.

The 3-member steering committee had fulfilled the responsibility of preparing the groundwork, but was physically incapable of handling the disconnection proceedings without full community support. At approximately this same time the COMMUNITY COUNCIL OF WHEELING, INC. had fully organized and accepted the establishment of the Wheeling Park District as their first project.

Not only was the WHEELING JUNIOR WOMAN'S CLUB a prime factor in the sustained interest in the accomplishments and progress of the steering committee, but also, because of the club's efforts, a new tool for community improvement had been created — the COMMUNITY COUNCIL.

In May, 1960, the COMMUNITY COUNCIL put into operation, for the first time, its system of communications to directly disseminate information about the disconnection procedure and to obtain 50 petition bearers from among members of participating organizations who compiled the signatures of 945 residents from 791 homes.

November 26, 1960, the Rural Park District approved the disconnection petition. The first phase of operations was successfully completed!

Again, the COMMUNITY COUNCIL network of communications and information was called into service as the formation of the Wheeling Park District became imminent. Again, the COUNCIL responded by eliciting continued support for the final phase of park district establishment.

The steering committee had the support of the COMMUNITY COUNCIL and thus, the support of the people. There was only one obstacle standing in the path of a successful referendum — finances. The COUNCIL, operating on a minimal budget to encourage maximum membership, had no funds available.

The WHEELING JUNIOR WOMAN'S CLUB had, at its disposal, the 1958-60 COMMUNITY ACHIEVEMENT CONTEST prize money (\$300 from the State award and \$1000 from the National award). This money was awarded with the stipulation that it was to be used, "for some community enterprise, at the discretion of the winning clubs".

Although the club was in a position to make an outright gift of the money to the steering committee, the WHEELING JUNIORS went on record as favoring a loan to establish a municipality that would be sustained by tax monies. It was their thought that, "philanthropic donations are too badly needed in this community for projects that have as their only resource, contributions". By loaning the money to form a park district the WHEELING JUNIOR WOMAN'S CLUB accomplished a 3-fold purpose (1) providing the necessary funds for a referendum, (2) expressing full confidence in the results of the referendum, (3) reserving the same money for a future "community enterprise".

In yet another manner the WHEELING JUNIOR WOMAN'S CLUB had occasion to express their sincere belief in a Park District. Half of the election judges serving at the referendum to establish a park district on December 23, 1960, were WHEELING JUNIOR WOMAN'S CLUB members.

The Wheeling Park District was voted into existence by a 6 to 1 majority.

Elected as Park District Commissioners were the 3-member steering committee and 2 other distinguished citizens with a long record of community interest and service. Recently elected as President of the Park District Board was the WHEELING JUNIOR WOMAN'S CLUB member who served throughout the entire organizational process.

The Wheeling Park District began on a firm foundation of policy, structure and procedure adopted through the employ of such professions as an attorney familiar with park district statutes, a secretary and treasurer thoroughly entrenched in the proper manner of maintaining sound records and an experienced recreation director. To further help alleviate the growing pains of the youthful park district further professional assistance has been received from the University of Illinois

Recreation Department and the Illinois Association of Park Districts.

The Wheeling Park District has already begun reaping the benefits of knowledge accrued through membership in the Illinois Association of Park Districts and the active participation of the Board President on the Association Legislative Committee.

Great strides have been made by the Wheeling Park District in an attempt to fill the community's most conspicuous vacuum -- recreation! Programs during the first year have included:

1. An 8-week summer recreation program conducted on the 3 school playgrounds featuring arts and crafts, softball, individual activities and group play. 1200 Wheeling children (an approximate 1/3 of the school age population) participated.
2. Construction and maintenance of ice skating facilities utilized by an estimated 400 during winter '61; 600, winter '62.
3. Winter recreation program for youth, teenagers and adults. Coeducational activities are conducted in a school gymnasium. Activities include basketball, volleyball, table tennis, weight-lifting, tumbling, badminton, shuffleboard, group play and individual activity. Attendance figures, average per week: Teenagers - 35; Youth - 120; Adults - 30.
4. Competitive leagues - 5 adult basketball leagues; 4 teenage basketball leagues.
5. Already planned is a summer recreation program patterned after the original program, only offering a wider range of activities. Also in progress are plans for an adult softball league.

The Park District Board of Commissioners are the first ones to realize they are filling only a portion of the recreation vacuum, but with positive planning and progress they hope to continue building an even more effective and expanded program on the firm foundation already laid.

The Wheeling Park District has remained in close contact with the COMMUNITY COUNCIL to secure a representative cross-section of public opinion on which to base much of their program; to keep the community informed of problems, progress and proposed plans; and to promote interest in existing programs. It is to this close contact that the Park District attributes much of its success and because of this, the Wheeling Park District shall continue the productive relationship.

Again, the WHEELING JUNIOR WOMAN'S CLUB has worked sustainingly, cooperatively and diligently to provide another tool for community improvement -- the Wheeling Park District.



ANNIVERSARY

★ 25 ★

CELEBRATION



There are cases where, in a mutual commitment to intergovernmental cooperation, Wheeling Park District programs and activities are held in facilities owned and operated under the jurisdiction of another unit of local government (village, school, library). In those instances and only where programs and activities are tailored to serve the principal facility users, the Wheeling Park District will extend resident fees to include the residents within the boundaries of the cooperating unit of local governments.

**REGISTRATION DEADLINE—What does it mean?**

For each program at the Park District, there's a minimum number of registrations needed before a class can "go". The registration deadline is the day when the registration minimum must be met. If the class must be cancelled due to low registration, this date allows adequate time to notify registrants.

If, however, the class is filled prior to the registration deadline, then of course that date would not apply. If the minimum has been met at the registration deadline (but not filled) you may still register after the deadline date.

**MIN/MAX—What does it mean?**

For each program at the Park District, there's a minimum number of registrations needed before a class can "go". Most teachers are paid *per class period, not per student*, so if not enough people register, the Park District loses money—your money.

But why a maximum? The more students, the less individualized attention. We like to keep the student/teacher ratio to ensure you get what you pay for—a high quality program.

The minimum number of registrations is the first number shown. The maximum is the second one shown.

**WHAT'S ON YOUR MIND?**

The Wheeling Park District has a commitment to being responsive to your needs and your views. We seek your comments (good news and bad news) about our programs, parks, facilities and staff. Please use the space below to express your views.



\_\_\_\_\_

\_\_\_\_\_

\_\_\_\_\_

\_\_\_\_\_

\_\_\_\_\_

NAME (Optional) \_\_\_\_\_

ADDRESS \_\_\_\_\_

PHONE NUMBER \_\_\_\_\_

**WHEELING PARK DISTRICT REGISTRATION FORM**

(PLEASE PRINT)

**DON'T FORGET TO INCLUDE YOUR SELF-ADDRESSED STAMPED ENVELOPE WITH YOUR CHECK FOR REGISTRATION**

(You may register for 1st, 2nd, or Both Sessions Now.)

Family Last Name \_\_\_\_\_ Parent's First Name \_\_\_\_\_

Address \_\_\_\_\_

Home Phone \_\_\_\_\_ Business Phone \_\_\_\_\_

| Participant's Name | Grade/Age | Activity Name & # | Location | Beg. Date | Class Day | Class Time | Fee | Second Choice |
|--------------------|-----------|-------------------|----------|-----------|-----------|------------|-----|---------------|
|                    |           |                   |          |           |           |            |     |               |
|                    |           |                   |          |           |           |            |     |               |
|                    |           |                   |          |           |           |            |     |               |
|                    |           |                   |          |           |           |            |     |               |
|                    |           |                   |          |           |           |            |     |               |
|                    |           |                   |          |           |           |            |     |               |
|                    |           |                   |          |           |           |            |     |               |
|                    |           |                   |          |           |           |            |     |               |
|                    |           |                   |          |           |           |            |     |               |

Babysitting Program \_\_\_\_\_ Day \_\_\_\_\_ Time \_\_\_\_\_

Camp/Bus \_\_\_\_\_ Site \_\_\_\_\_

GRANT PERMISSION FOR PERSONS REGISTERED TO PARTICIPATE IN ACTIVITIES LISTED AND WAIVES WHEELING PARK DISTRICT, BOARD OR STAFF FROM ANY LIABILITY. NO MEDICAL INSURANCE IS PROVIDED IN ANY PROGRAM.



WHEELING PARK DISTRICT 25TH CELEBRATION  
COMMITTEE  
TOP: RHEA LAUING, JOHN PIAZZA, CINDAY SCHARR  
TRACY TAYLOR ALBERTA KLOCKE  
BOTTOM: JOHN MUNO, PAT HANCOCK, RUTH WELDER

HERITAGE PARK  
222 S. WOLF RD., WHEELING, IL  
60090 (312) 537-2222

# WHEELING PARK DISTRICT

WHEELING, ILLINOIS

CHEVY CHASE  
1000 N. MILWAUKEE, WHEELING, IL  
60090 (312) 537-2930

June 15, 1986

Dear Wheeling Park District Patron:

You are cordially invited to attend the 25th Anniversary Celebration of the Wheeling Park District which will take place on Sunday July 27, 1986.

We have a full line up of activities planned for the whole family! Come out and re-discover your Parks by participating in one or all of the events that will be held throughout the community at all of our major Park and Facility locations.

A preliminary schedule of the days events is enclosed.

Please RSVP to Rhea at 537-2930 on or before July 15, 1986.

Sincerely,

The Board of Park Commissioners  
& Staff of The Wheeling Park District



MINUTES OF THE FINAL MEETING  
OF THE  
25TH ANNIVERSARY COMMITTEE  
MEETING, NOVEMBER 24, 1986

The final meeting of the 25th Anniversary Committee was held at the Wheeling Park District, Chevy Chase Clubhouse, Gable Room, 1000 N. Milwaukee Avenue, Wheeling, Illinois on Monday, November 24, 1986.

The meeting was called to order at 9:35 a.m. Committee members in attendance were: Ruth Wieder, Patricia Hancock, Alberta Klocke. Staff Committee members: Superintendent of Leisure Services; John Muno, Superintendent of Resource Management; John Piazza, Recreation Coordinators; Tracy Taylor and Cindy Scharr, Administrative Secretary; Rhea Lauing.

Guest Present: Commissioner Ed Klocke, Park District Manager; Karop Bavougian.

The 25th Anniversary Committee previously decided to convene after the 25th Anniversary Celebration to re-cap on that days events and to make suggestions for improving future Park District special events and to make recommendations to the Board of Park Commissioners for the contents, location and date the time capsule would be reopened.

Ruth Wieder opened the meeting stating she would like to apologize to the Board of Park Commissioners for scheduling this meeting in the morning which is an inconvenient time for the Board members due to their work schedules. Ruth indicated that if the Board so desired another meeting could be scheduled at a latter date. Ruth requested the minutes for this meeting be given to the Board of Park Commissioners for their approval.

Ruth Wieder questioned when the time capsule would be re-opened. Park Manager; Bavougian suggested the 50th Anniversary of the Park. Discussion ensued and the Committee agreed on recommending to the Board the reopening of the time capsule take place on the Parks 50th Anniversary.

The Committee discussed where the burial of the time capsule should be. The Committee agreed to recommend to the Board the time capsule be buried at Heritage Park in a location identified in a sealed and confidential envelope to be secured in the Wheeling Park District safe, located at Chevy Chase. Access to the confidential envelope identifying the location of the buried time capsule; and access to the time capsule itself only be authorized by action of the Wheeling Park District Board of Park Commissioners.

The Committee discussed the articles that would be placed inside the time capsule. It was the Committee's recommendation the following items be included.

1. Newspaper articles pertaining to the Parks 25th Anniversary
2. 1978 Park District gold medal
3. 1978 Park District brochure
4. 25th Anniversary Celebration invitation
5. 25th Anniversary flyer listing locations and times of events
6. 25th Anniversary Celebration poster
7. Two (2) 1986 Park District brochures - Winter/Spring and Summer
8. Copy of "Did You Know" a brief history of the Wheeling Park District
9. Copy of the Wheeling Park District's history for the past 25 years
10. Three (3) Chevy Chase menus (all different)
11. A tree memorial card
12. Golf Course score card
13. Banquet menus, current and past
14. Two (2) Ballroom Dance flyers
15. Chevy Chase Gable Room menu

16. Map of Wheeling
17. 25th Anniversary committee meeting minutes
18. Chevy Chase brochure
19. 25th Anniversary Celebration program from Chevy Chase
20. Picture and ribbon from the Park's 1978 Gold Medal Award Ceremony
21. 25th Anniversary Celebration napkin
22. 25th Anniversary Celebration program from St. Joan's Ecumenical services
23. 25th Anniversary Celebration pictures
24. 25th Anniversary postage seal
25. Picture of the Board of Park Commissioners
26. Picture of the 25th Anniversary Committee
27. Copy of the clergy invitation
28. Chevy Chase matchbook
29. 25th Anniversary Celebration budget
30. Copy of Resolution 86-84 re: 25th Anniversary Time Capsule Commemoration

Ruth indicated we had a poor turn out at the days events that were scheduled for the 25th Anniversary Celebration and asked for suggestions on how we could reach more citizens. Discussion ensued.

Alberta Klocke suggested that in planning future Special Events where invitations are used we address the invitation directly to a person in place of Park District Patron. Alberta advised the committee there was a poor showing on behalf of the Village of Wheeling and all Wheeling municipalities and suggested we back up our written invitations with a personal phone call.

Park District Manager; Bavougian indicated there seems to be a lack of communication between the Park District and the municipalities of Wheeling. Park District Manager; Bavougian suggested that when planning Special Events in the future, we make a definite effort to keep the Village informed on our events. Park District Manager; Bavougian indicated that it might be a good idea for the municipalities to present these Special Events in the form of a proclamation. Park District Manager; Bavougian advised that all written invitations should be followed with a personal phone call and that an effort by the Park District be made on attending and acknowledging all Village programs and Special Events.

Ruth Wieder questioned if invitations were sent to State officials? Rhea indicated yes. Rhea advised the committee Governor Thompson's office and Representatives Peterson and Stern did acknowledge their invitations by phone but were unable to attend the Celebration due to previous engagements.

Park District Manager; Bavougian indicated he would like to hear comments on the days events from Commissioner Klocke.

Commissioner Klocke indicated that it was his opinion that more people should have attended the Anniversary Celebration. Commissioner Klocke suggested the days events could have been better marketed.

Ruth Wieder indicated the people in the community did not feel this Celebration was for them. Ruth suggested we find a better way of reaching the coaches, volunteers, seniors, etc.

Tracy Taylor advised the people she had spoken to in regards to the 25th Celebration indicated they had made previous plans of their own, i.e. vacations, trips, picnics, etc.

Ruth Wieder questioned recruiting more volunteers. Discussion ensued and the committee indicated that in the future, more volunteers be asked.

Park District Manager; Bavougian suggested future Special Events be contained to one facility and one major event.

Alberta Klocke indicated her disappointment with the turn out for the 25th Anniversary Celebration at St. Joan's for the Ecumenical Services. Alberta suggested that in the future we use the Ministerial Association and have them involved. Alberta advised the committee that our Park District is unique because we have our own Chapel. Alberta suggested we utilize this Chapel more in the future and suggested we have another Ecumenical Service for the citizens of Wheeling in the very near future.

Discussion ensued on planning a "Mortgage Burning Party" in 1991 when Chevy Chase Clubhouse will be paid in full.

Commissioner Klocke requested the Committee set a date for the time capsule to be buried. Discussion ensued.

The Committee concurred that copys of all items to be placed in the time capsule be made, for a scrap book.

Alberta Klocke indicated that a Resolution with the Committees recommendations be presented to the Board of Park Commissioners and that the Board set a date, which will be included in the Resolution for the re-opening of the time capsule. The committee concurred.

The Committee agreed that after Board's approval of the Resolution, and copys of the contents of the time capsule are made, Superintendent Piazza will bury the time capsule.

Patti Hancock volunteered to put together the 25th Anniversary Scrapbook.

Ruth Wieder requested the committees approval on removing the picture of the Bon Aire Country Club that was framed and displayed at the 25th Anniversary Celebration at Chevy Chase be given to Patti for installing glass over the picture. The Committee agreed.

Ruth Wieder thanked the Committee for all the hard work they had done and advised how pleased she was to have had the opportunity to work with the people involved.

The meeting of the 25th Anniversary Committee adjourned at 11:10 a.m.



# Wheeling Park District 25th Anniversary Party Sunday July 27th

DEAR WHEELING PARK DISTRICT PATRON:

The Wheeling Park District invites the entire Community to come join us in celebrating the Twenty Fifth Anniversary of the Wheeling Park District.

We have a full line up of activities planned for the whole family! Come on out and re-discover your Parks system by participating in one or all of the events to be held throughout the community at all our major Park and Facility locations.

Pack a picnic lunch and plan on spending the whole day in the Parks!

A preliminary schedule of the days events include the following:

| TIME                     | LOCATION   | EVENTS  |
|--------------------------|--|---|
| 9:00 AM                  | Childerley Park<br>506 McHenry Rd<br>(Please bring your lawn chairs) | All Denomination<br>Chapel Service,   |
| 9:30 AM                  | St. Joan's House<br>506 McHenry Rd.                                  | Refreshments  |
| 12:00 PM                 | Horizon Park<br>378 Schoenbeck                                       | Dedication of<br>Horizon Park   |
| 12:30 PM                 | Horizon Park<br>378 Schoenbeck                                       | Youth Baseball Game   |
| 1:00 PM<br>To<br>3:00 PM | Heritage Park<br>222 S. Wolf Rd.                                     | Time Capsule<br>Balloon Launch<br>Animal Kingdom Show<br>Clown/Costume<br>Characters<br>Popcorn/Candy/<br>Pocket Lady<br>Face Painting<br>Childrens Games |

| TIME                      | LOCATION                         | EVENTS   |
|---------------------------|----------------------------------|--|
| 3:30 PM<br>To<br>5:30 PM  | Chamber Park<br>251 N. Wolf Rd.  | Ice Cream Social<br>Outdoor Concert<br>Entertainment   |
| 6:30 PM                   | Chevy Chase<br>1000 N. Milwaukee | Audrae Duke Memorial Presentation  |
| 7:00 PM<br>To<br>10:00 PM | Chevy Chase<br>1000 N. Milwaukee | Welcome Ceremony (Board of Park Commissioners & Guests)<br>Anniversary Cake Cutting Ceremony<br>Cocktails (Cash Bar)<br>Hors d'oevers<br>Secret Table<br>Dancing & Entertainment by Vito Buffalo & his Orchestra |





HERITAGE PARK  
222 S. WOLF RD., WHEELING, IL  
60090 (312) 537-2222

**WHEELING PARK DISTRICT**  
WHEELING, ILLINOIS

CHEVY CHASE  
1000 N. MILWAUKEE, WHEELING, IL  
60090 (312) 537-2930

June 6, 1986

Dear Rabbi Rosen, Reverend Miller and Father Mulcahy:

The ecumenical services are set for 9:00 A.M. on Sunday July 27, 1986 at Childerley Park to celebrate the 25th Anniversary of the Wheeling Park District.

We are enclosing phone numbers for each of you hoping that the three of you will be able to meet and decide as to what type of service would be appropriate for the occasion.

On behalf of the committee we would like to thank you all for helping us make this a memorable day for the Wheeling Park District and the residents of the Village of Wheeling.

Again thank you.

Sincerely,

Mrs. Edward L. Klocke  
Alberta

Reverend Howard J. Miller  
326 Surry Lane  
459-9614

Father George Mulcahy  
181 West Dundee Rd.  
537-2740

Rabbi Mordecai Rosen  
760 Checker Drive  
Buffalo Grove, Il  
459-3279

WHEELING PARK DISTRICT  
25TH ANNIVERSARY CELEBRATION  
SUNDAY, JULY 27TH

Dear Wheeling Park District Patron:

The Wheeling Park District invites the entire Community to come join us in celebrating the Twenty Fifth Anniversary of the Wheeling Park District.

We have a full line-up of activities planned for the whole family! Come on out and re-discover your Parks system by participating in one or all of the events to be held throughout the community at all of our major Park and Facility locations.

A pre-liminary schedule of the days events includes:

| TIME         | LOCATION                              | EVENTS PLANNED   |
|--------------|---------------------------------------|--|
| 9:00 AM      | Childerley Park<br>506 McHenry Rd.    | All Demonation Chapel Service;<br>Commerative Tree Planting Service;<br>Coffee, Juice and Pastries                       |
| Noon         | Horizon Park<br>378 Schoenbeck        | Dedication of Horizon Park and<br>Youth Baseball Games Exhibition  |
| 1:00-3:00 PM | Heritage Park<br>222 S. Wolf Rd.      | Time Capsule re-discovery;<br>Permanent Plaque establishment;<br>Balloon Launch; Activities and<br>Entertainment for all |
| 3:30-5:30 PM | Chamber Park<br>251 N. Wolf Rd.       | Outdoor Concert; Ice Cream Social;<br>Historical Exhibits  |
| 7:00-9:00 PM | Chevy Chase<br>1000 N. Milwaukee Ave. | Speeches/Presentations<br>Dancing/Entertainment<br>Anniversary Cake  |

NOTE: Please note that due to early publication of Summer Brochure, locations, times and activities listed above are pre-liminary and potentially subject to change. Watch posters, flyers, Cable TV, and other community information for details, or call the Wheeling Park District Leisure Service Department at 537-2222.

*Wheeling Park District  
25th Anniversary*



*Wheeling Park District  
25th Anniversary  
Ecumenical Service  
Childerley Park  
506 McHenry Rd.  
Wheeling, Illinois  
Sunday, July 27, 1986*



HERITAGE PARK

222 S. WOLF RD., WHEELING, IL  
60090 (312) 537-2222

WHEELING PARK DISTRICT

WHEELING, ILLINOIS

CHEVY CHASE

1000 N. MILWAUKEE, WHEELING, IL  
60090 (312) 537-2930

60 East Jeffrey Avenue  
Wheeling, IL 60090

May 10, 1986

Dear Friend:

Audrae L. Duke contributed her talents, energy and time to the development of Wheeling, especially to the establishment of parks and recreation. The result of that endeavor is the Wheeling Park District which celebrates twenty-five years of incorporation on July 27, 1986. This event provides us, Audrae's friends, with an opportunity to acknowledge her service to the community as co-founder of the District and its first President in 1961. We have planned a tribute in the form of a commemorative plaque which will be installed permanently in an appropriate park location and dedicated on July 27.

The cost of the plaque will be underwritten by The Friends of Audrae L. Duke. We would appreciate your donation in any amount. Checks or money orders should be made out to the Wheeling Park District, earmarked for the "Duke Plaque", and sent to me at 60 East Jeffrey Ave., Wheeling, IL, 60090, by June 10.

Please join us in remembering Audrae.

Best regards,

*Barbara*

Barbara L. Farr  
Treasurer  
The Friends of Audrae L. Duke



# Questions, Answers On Park Issue Given

The Park District Steering committee this week answered questions presented by Wheeling residents who will be asked to decide on a park system December 23.

**Q. What is a park district?**

**A.** A park district is a corporate body with the authority to levy and collect taxes on all taxable property in the district. It plans, establishes, and maintains recreational programs, and acquires land necessary for these purposes.

**Q. What area will be in the park district?**

**A.** All of Wheeling except a small parcel to the south.

**Q. Where will the park be?**

**A.** The park will be developed on available public lands throughout the new district. Actually, there will be not one park but many parks located in several areas. The school district has indicated a willingness to allow the parks on school lands.

**Q. What will it cost?**

**A.** The average home owner would pay about \$5 a year for a park and recreational system, at a rate of 10 cents for each \$100 of assessed valuation.

**Q. What kind of recreation-**

**al program does the steering committee propose?**

**A.** To develop ice-skating facilities immediately and as soon as funds are available to hire a recreation director to set up a full program for children of all ages.

The polling place for the referendum December 23 will be Mark Twain school. Balloting will be from 6 a.m. to 6 p.m.

Absentee ballots may be obtained from Mrs. George Bobalko, 706 N. Wayne.

A person need not be a registered voter to cast his ballot. However, a residency requirement of 30 days in the precinct, 90 days in the county, and a year in the state is required.

Mrs. Bobalko will serve as an election judge with Mrs. James Wleder, Mrs. William Lasley, Mrs. A. Bernstein, and Mrs. Edward Klocke.

(WF)

## Petitions Ready For Park District

Mrs. G. L. Duke, secretary of the park district steering committee, told the Herald this week that the last signature necessary for the disconnection of land from the inactive rural park district has been obtained.

According to Mrs. Duke, petitions bearing the signatures of 945 residents of the area to be disconnected will be presented to the rural park district as soon as possible.

**AFTER A 30-DAY** waiting period, the rural district will either approve or disapprove the petitions. If the disannexation is approved, a functional park district will be planned and presented to the public in a referendum in early December.

In all, 900 acres will be disconnected. The area is bounded by Schoenbeck rd., Merle

lane, Dunhurst's east border, and an uneven line north of Dundee rd.

Petition bearers obtained the signatures of land owners representing 540 acres, well over the required majority. Of a total 791 homes, owners of 606 approved the disconnection.

**THE STEERING** committee started in June to obtain the signatures needed for the establishment of a Wheeling park district. The committee, endorsed by the Community Council, is spearheaded by Art Brown, president, and Ralph Neubauer.

Disannexation proceedings were slowed considerably, Mrs. Duke said, by a time-consuming process of obtaining the signatures of owners of large plots of land. (WF)

## Seek Park Referendum

Announcement is made by the Park District Steering Committee that remaining signed petitions have been returned and indicate that Wheeling soon will be included in one park district.

Members of the Steering Committee said the results far exceeded their expectations. Not only were the majority of land owners in favor of disannexation, but the land areas as well. Results of petitions showed a land area of over 500 acres in favor; and, out of a possible 791 homes, 606 homes with a total of 945 signatures were obtained.

Some 900 acres will be disannexed from the Rural Park District. The area is roughly just West of Shoenbeck Road to East of Dunhurst Unit #1, South to South Merle Avenue.

The Rural Park District is required to keep the petitions for a month before a referendum can be held. As soon as the referendum is held and passed, Wheeling will have a single park district.

The petitions which seeked disannexation from the Rural Park District, are now in the hands of the Park District Attorney. The petitions will be presented to the Rural Park District for action within the week.

## Notice of Special Election

Public Notice is hereby given that on Friday, the 23rd day of December, 1960, an election will be held in the territory hereinafter described for the purpose of voting "for" or "against" the question of the organization of the proposed general park district to be known as the "Wheeling Park District," Cook County, Illinois, under the provisions of the Act of the General Assembly of the State of Illinois, entitled "An Act concerning park districts of less than 500,000 inhabitants and to repeat certain acts herein named," approved July 8, 1947, as amended, said Act being commonly referred to as "The Park District Code," such general park district to consist of the territory described as follows:

Commencing at the intersection of the north line and the east line of Section Three (3), thence south to the east-west center line of Section Three (3), thence west on said east-west center line and the east-west center line of Section Four (4) to the north-south center line of the east-half of said Section Four (4), thence south on said north-south center line and the north-south center line of the east half of Section Nine (9) to the east-west center line of the south-half of said Section (9), thence east along said east-west center line and the east-west center line of the south-half of Section Ten (10) and the east-west center line of the south-half of Section Eleven (11) to the north-south center line of the west-half of Section Eleven (11), thence north along said north-south center line to the east-west center line of said Section Eleven (11), thence east along said east-west center line and the east-west center line of Section Twelve (12) to the center line of the Des Plaines River, thence in a northerly direction along said center line to the north-line of Section Two (2), thence west along said north line to the place of beginning, all in Township 42 North, Range 11, East of the Third Principal Meridian in Cook County, Illinois

and to elect five Park Commissioners.

That for the purpose of said special election said territory shall constitute a single election precinct and the polling place designated for said election is, as follows:

Mark Twain School, located at 515 E. Merle Avenue, Wheeling, Illinois

The polls at said election will be opened at 6:00 A.M. and will be closed at 6:00 P.M. on the same day and all voters residing within said territory as above described, shall vote upon the question of the organization of said proposed general park district and to elect five Park Commissioners on a ballot to be substantially the following form:

**OFFICIAL BALLOT**  
(INSTRUCTIONS TO VOTERS: Place a cross (x) in the square to the left of the statement indicating the way you desire to vote)

FOR PARK DISTRICT

AGAINST PARK DISTRICT

FOR PARK COMMISSIONERS  
(Vote for five)

(Here will be inserted names of nominees, if any, with square at left opposite each, and five additional blank lines for voters to write in names if desired)

\_\_\_\_\_  
 \_\_\_\_\_  
 \_\_\_\_\_  
 \_\_\_\_\_  
 \_\_\_\_\_  
 \_\_\_\_\_  
 \_\_\_\_\_  
 \_\_\_\_\_  
 \_\_\_\_\_

By order of the County Judge of Cook County, this notice is given by the Clerk of the County Court of Cook County, Illinois, this 29th day of November, 1960.

Edward J. Barrett  
Clerk of the  
County Court of  
Cook County, Illinois

Published in Wheeling Herald December 1, 1960.

# REFERENDUM ON PARK DISTRICT DECEMBER 23

A referendum to create a park district for Wheeling will be put before the voters on Friday, December 23rd. This was the long awaited announcement of the Park District Steering Committee of Wheeling. The date for the referendum was filed on Monday by the Steering Committee Attorney, Roger Bjorvick, following a meeting of the Rural Park District on Saturday.

At the meeting, the Rural Park District reviewed the petition for disconnection of some Wheeling areas and drew up an ordinance of disconnection, also filed on Monday.

The creation of a Wheeling-Park District has been a long slow process. Work was actually begun in January, 1959, with the biggest strides made in July, 1960. During that month, some 50 people, all representing organizations in the Wheeling Community Council, began a door to door campaign for signatures of property owners. An overwhelming majority, over one thousand persons, were in

favor of disconnection from the Rural Park District. Filed along with the petition for the referendum were the petitions of five persons wishing to serve as Wheeling Park District Commissioners. They were Mrs. G. L. Duke, Arthur Brown, and Ralph Neubauer, all members of the Park District Steering Committee, and Arthur Aronson and Ted Scanlon.

All have displayed an interest in the establishment of a park district in the past. Mrs. Duke, Brown and Neubauer have been members of the Steering Committee since it originated, while Aronson and Scanlon have been active in youth activities in the village.

Aronson is a past president and member of the Wheeling Board of Education, while Scanlon is Police Magistrate of the Village.

The only polling place for the Park District referendum will be the Mark Twain School. Hours for voting will be from 6:00 a.m. to 6:00 p.m.

## Park Vote Set For Dec. 23

A referendum to establish a Park District in Wheeling will be held on Friday, December 23rd, at the Mark Twain School, Merle Avenue, Wheeling.

The Twain school will be the only polling place, and will be open from six o'clock in the morning until 6 p.m.

The December 23rd date was set in order to assure the canvass of votes by December 31st. If the election were not held before December 31st, the park district would not be on the tax rolls for 1961, nor would they be entitled to funds for the year.

All residents over 21 years of age, living in the proposed park district, will be eligible to vote. Other requirements are the voter must have resided in the area for 30 days, in Cook County for 90 days, and in the State of Illinois for one year.

Anyone who will be out of town for the holidays but wishes to vote may obtain an application for an absentee voter's ballot at the home of Mrs. George Bobalko, 706 N. Wayne, Wheeling.

Mrs. Bobalko, an election judge, was sworn in by the Clerk of the County Court on Wednesday in order for her to act in this capacity.

Joining Mrs. Bobalko as election judges are Mrs. James Wieder, Mrs. William Lasley, Mrs. Alvin Bernstein and Mrs. Edward Klocke.



# VOTE FRIDAY ON PARK DISTRICT

A Park District, which could eventually provide Wheeling with much needed recreational facilities, now lies in the hands of Wheeling voters who go to the polls tomorrow.

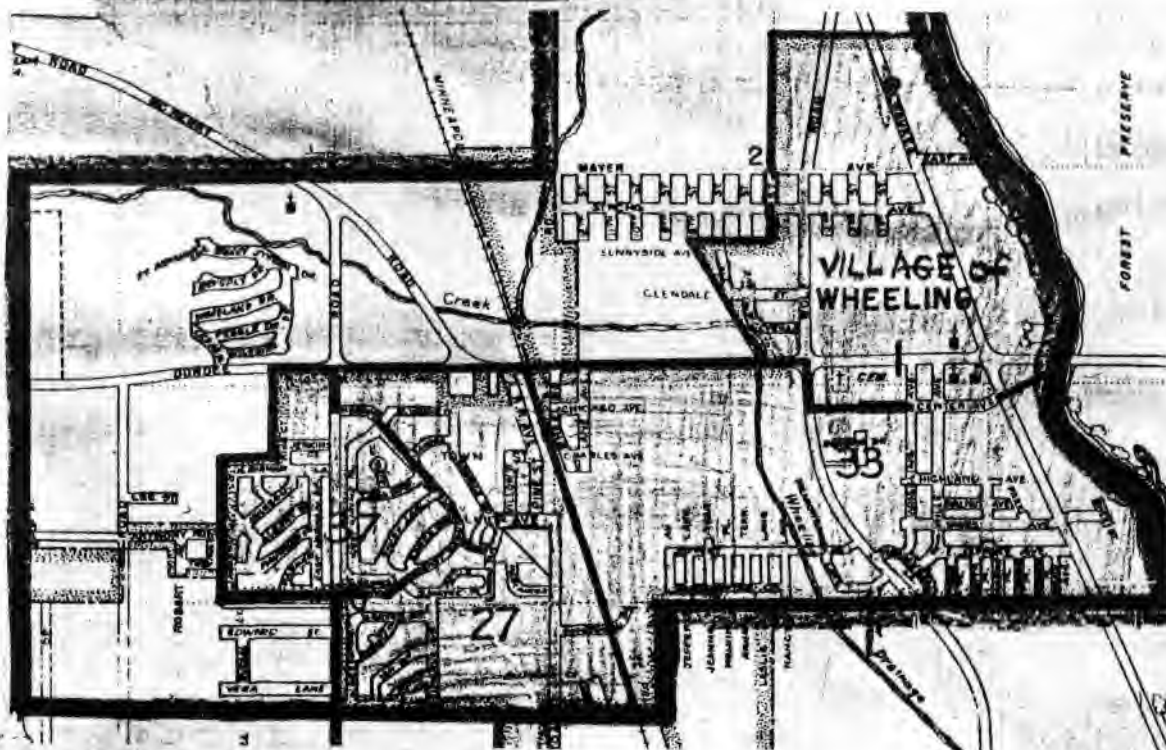
The voters will cast their ballots on a referendum to create a Park District for Wheeling. All of Wheeling, with the exception of a small parcel of land on the southern boundary, will be included in the proposed park district.

Much of this land area had until recently been a part of the Rural Park District. Home owners and property owners in the area, however, petitioned for disconnection from the Rural District, and a decision in their favor was granted in November.

In addition to the Park District Referendum, will be the election of Park District Commissioners. Five residents have filed petitions for the posts and include: Mrs. G.L. Duke, Arthur Brown, Ralph Neubauer, Arthur Aronson, and Ted Scanlon.

Pending a favorable outcome, the commissioners hope to offer a program to Wheeling residents immediately. The first project contemplated is ice skating facilities at all schools. Summer recreational programs will be larger in scope and long range plans include year-round and full scale summer programs.

The Mark Twain School on Merle Avenue will be the only polling place, with hours set from 6 a.m. to 6 p.m.. Residents, over 21 years of age, who live in the proposed park district and meet the general requirements for state and local elections are eligible to vote.



Map of Wheeling area. Inside heavy line indicates Wheeling village limits. Outer line designates area to be incorporated in a Wheeling Park District. Residents in this area will vote on a referendum to create a park district tomorrow, December 23, at the Mark Twain school.

# NEW PARK DIST. GETS 6 TO 1 NOD

## Members Of Board Are Named

By a margin of six to one, Wheeling voters approved the new park district Friday.

Official canvass of the balloting showed 152 yes votes to 27 opposed.

The light voting was attributed partly to sub-zero temperatures Friday by Mrs. G. L. Duke, one of the newly-elected park commissioners.

The vote and canvass prior to January 1 will enable the new park district to appear on the 1961 tax rolls. A maximum tax of 10 cents per \$100 assessed valuation is possible.

Elected as the first district park commissioners were Mrs. Duke, 107 Meadowbrook ln.; Art Brown, 235 Renee tr.; Ralph Neubauer, 773 S. Merle ln.; Art Aronson, 2818 N. Schoenbeck rd.; and Ted Scanlon, 281 Park ave.

**BROWN**, Neubauer and Mrs. Duke were members of the park district steering committee which worked for formation of the district during the past two years.

Terms for the new commissioners will be decided by lot at the first park commission meeting January 9. Terms will be staggered with one two-year term, two four-year terms and two six-year terms.

Final obstacle to the park district formation was removed November 26 when the Wheeling Rural Park District disconnected a major portion of the new district's area.

**THE NEW** district includes all land in the village except a small parcel on the south. It also includes some adjacent unincorporated land. It is bounded on the east by the Des Plaines river and on the west by a line paralleling Elmhurst rd. 1¼ miles to the west. North and south boundaries roughly coincide with village limits.

## Approve New Park District 152 to 27

of 152 to 27, Wheeling citizens approved to establish a park district in Wheeling. 80 votes was cast in the election, which Friday, December 23.

vate also approved a slate of five persons king election as park district commission- e were: Mrs. G.L.Duke, Ralph Neubauer, on, Arthur Brown and Ted Scanlon. Mrs. er and Brown had previously served on rict Steering Committee, which came into

existence approximately two years ago

Following the canvass of votes on 27th, the commissioners designated 9th, as the date of their first meeti meeting will include organizational activities the park district might put iate future.

Serving as judges for the election Bobalko, Mrs. James Wieder, Mrs. Mrs. Edward Klocke and Mrs. Alvin E



# Park Board Holds Initial Meeting

Wheeling park district commissioners held their first meeting January 11 at the home of Art Brown. Leaving their terms of office up to fate, commissioners drew slips of paper from a basket.

Serving six-year terms on the park board will be commissioners Art Aronson and Ted Scanlon; four-year terms were drawn by Art Brown and Ralph Neubauer; and Mrs. G. L. Duke will serve two years.

**ELECTED PRESIDENT** of the board was Art Brown. Vice president will be Mrs. Duke. Designated terms will begin in April when the district's fiscal year begins.

Hired as park district attorney was Roger Bjorvick, who aided in the formation of the district and is attorney for the Palatine park district. The attorney will also serve the Wheeling district as secretary-treasurer.

The Wheeling board of park commissioners will meet the

# Tentative Budget Set by Park Board

A tentative two-year budget of \$19,000 was set by the Wheeling park district board at its meeting last week.

It was explained that the board could operate with anticipation warrants this year until the tax monies begin coming in at the beginning of 1962. (As the board was just formed in December, it will receive no tax funds this year. Taxes collected for 1961 will be received early in 1962.)

**AMONG ITS** plans, the board hopes to be able to hire a supervisor next winter for the ice rink it had built in the Chamber of Commerce park last month.

The group met with the Chamber of Commerce in the village hall February 15.

Tax for property owners of the park district will be eight cents per \$100 assessed valuation, it was reported. A public hearing must first be held on an ordinance authorizing the tax.

**DIRECTORS OF** other park districts will be invited to attend the next meeting of the Wheeling park board to exchange ideas. The meeting will be March 2 at the village hall.

Attending last week's meeting were Arthur Brown, Au-

drae Duke, Arthur Aronson and Ralph Neubauer. (WF)

# To Interview Park Directors

Following their regular monthly meeting on Thursday, March 2, the Wheeling Park District Commissioners have scheduled a special meeting for Thursday, March 16, for the purpose of interviewing applicants for the post of summer recreation director in Wheeling.

The first community-wide summer program contemplated by the Park District will be eight weeks in length, with the daily program ranging from three to five hours per day.

The Commissioners announced that all schools in the area would be contacted to inform instructors of the position of a summer park district director now open. Applicants should be male, over 25 years old, with some experience in a recreation program. The director would supervise activities and personnel in the Wheeling program.

The preliminary plans were made at the regular meeting when the Commissioners invited two local residents to attend as special guests and advisors. The two, Richard Ault and Norman Geske, told of the programs set-up in the communities they had served, qualifications desirable in a director, finances, as well as the responsibility of the Park District in undertaking the summer program.

The interviewing sessions will begin at 9p.m. at the Wheeling village hall.

3-9-61

# Superintendent Hired for Parks

3-20-61

The Wheeling park district has announced the employment of Wheeling's first park superintendent, Eugene W. Sackett.

He was interviewed along with several other candidates March 16.

Sackett has been a physical education instructor at Glenbrook high school for the past year. He coaches football, basketball and track at the high school.

Before coming to this area he was employed by the Sandy Spring high school in Atlanta, Ga. The 39-year-old teacher received his bachelor's degree at Yankton college in Yankton, S. D., and his masters degree in education at South Dakota University in Vermillion, S. D.

Now a Wheeling resident, he is married and has three children, ages 14, 11 and 3.

**IN THE FIELD** of recreation, Sackett has had 13 years experience working with the city recreation program in

Atlanta.

He has expressed a desire to formulate a summer recreation program suited especially for this area and the most prevalent age groups. He has further indicated a desire to act as consultant to the park district board of commissioners during the winter months.

After consulting with the park board as to available finances, recreation areas and goals, superintendent Sackett will immediately begin work on the summer recreation program. Directors and assistants will be hired to carry out the proposed 8-week program. (WF)

HERITAGE PARK - HOLMES SCHOOL  
AIR VIEW





FERDINAND C. ARNDT  
PARK SUPERINTENDENT  
1967-1972



EUGENE W. SACKETT  
FIRST PARK SUPERINTENDENT  
1961-1966



DAVID F. PHILLIPS  
SUPERINTENDENT  
1972-1986





FERD ARNDT & PAT HANCOCK  
FIRST FULL TIME SECRETARY  
1967-1986



WILLIAM F. BLANK  
FIRST TREASURER WPD.



ROGER BJORVIK  
FIRST ATTORNEY WPD.



ANN EGAN  
FIRST PART TIME SECRETARY  
1966- 1986



WHEELING PARK DISTRICT  
BOARD OF PARK COMMISSIONERS  
1961 TO DATE

|   |  |
|---|--|
| <p>1961 Arthur Aronson<br/>Ted Scanlon<br/>Arthur Brown<br/>Ralph Neubauer<br/>Audrae Duke<br/>Richard Ault 6/61<br/>Roy Hammond 10/61<br/>Michael Donzella 12/61</p> | <p>1975 Robert Ross<br/>William Nevenfeldt (Mv)<br/>Lorraine Lark 4<br/>Hugh Wilson<br/>Frank Schnaitmann<br/>Doris Kerr 2/76</p>              |
| <p>1963 Arthur Aronson<br/>Audrey Christianson<br/>Clayton Wieder<br/>Roy Hammond<br/>Richard Ault</p>  | <p>1977 Lorraine Lark 2<br/>Doris Kerr<br/>Frank Schnaitmann<br/>Shirley Mueller 6<br/>Glenn Meier 6</p>                                       |
| <p>1965 Joseph Harrison<br/>Audrey Christianson<br/>Clayton Wieder<br/>Richard Ault<br/>Bernard Erlin<br/>Harry Thill 3/65</p>  | <p>1979 Lorraine Lark Died-9/80<br/>Frank Schnaitmann<br/>Shirley Mueller 4<br/>Glenn Meier 4<br/>Edward Klocke 6</p>                          |
| <p>1967 Audrey Christianson<br/>Richard Ault Resigned<br/>Bernard Erlin<br/>Lorraine Lark<br/>Alf Wilson<br/>Robert Ross 9/61</p>                                     | <p>1981 Shirley Mueller 2<br/>Glenn Meier 2<br/>Edward Klocke 4<br/>Donald Lark 4A<br/>Russell Baker</p>                                       |
| <p>1969 Robert Ross<br/>Bernard Erlin<br/>Lorraine Lark<br/>Alf Wilson<br/>Eugene Sackett<br/>Gus Nizzi 4/71</p>  | <p>1983 Donald Lark 2<br/>Edward Klocke 2<br/>Russell Baker-Resigned<br/>Julia Robberson 6<br/>Anthony Abruscato 6<br/>Dennis Drake 7/84 A</p> |
| <p>1971 Eugene Sackett<br/>Robert Ross<br/>Gus Nizzi (Resigned)<br/>Lorraine Lark<br/>Bernard Erlin</p>   | <p>1985 Donald Lark 6<br/>Edward Klocke 6<br/>Julia Robberson 4<br/>Anthony Abruscato 4<br/>James Gallagher 6</p>                              |
| <p>1973 Robert Ross<br/>Eugene Sackett<br/>Lorraine Lark<br/>Gus Nizzi (resigned)<br/>Frank Schnaitmann 10/73<br/>Hugh Wilson</p>                                     | <p>1987 James Gallagher 4 (D) 89<br/>Edward Klocke 4<br/>Donald Lark 4<br/>Julia Robberson 2<br/>Anthony Abruscato 2</p>                       |

First  
of  
WHEELING  
PARK  
DISTRICT  
Commissioners



*Ralph Neubauer*



*Arthur Aronson*



*Audrie Blake*



*Richard Cull*



Ray Hammond

3



Clayton Wiedes

1



Led Scanlon

5



Harry Thill

4



Anoley Christensen

2





# Parks Elections Tuesday!



LORRAINE LARK



ALF WILSON



GENE SACKETT



ANDRW BJORNSON



HARRY THILL

Wheeling residents will elect two park commissioners next Tuesday in one of the most hotly contested races in the seven year history of the park district.

Three west side residents, Mrs. Lorraine Lark, Alf Wilson and Andrew Bjornson, and former parks Supt. Gene Sackett are vying against incumbents Clayton Wieder and Harry Thill.

There are only two posts open.

West siders Mrs. Lark and Wilson have charged at public forums that the present board has not provided comparable park facilities in that part of the village.

MRS. LARK, Wilson and Bjornson waged a battle to get a second polling place in west Wheeling, but the present board turned down their request. The commissioners said "it would cost simply too much money to locate a second polling place there."

The sole polling place will be the Heritage Park Recreation building 222 S. Wolf Road, in the east section of the village.

West side residents in general have been critical of the Wheeling Park Board in recent months. Husky Park, that flooded piece of real estate just south of Jack London Junior High School, has been a constant thorn in the side for the present board.

IN MARCH the commissioners took bids to make the park into a retention lake, costing \$11,542. Starting the project was delayed, however, because the park board is seeking financial help from the village on it. The village will say Monday if they will participate.

The campaign got off to a

lively start March 4 when the first filing took place. Sackett, who quit his post as part-time superintendent last summer, charged the handling of the filing was "unethical."

Sackett, who openly argued with some commissioners before resigning, was angered because Atty. Roger Bjorvik took two letters containing the peti-

tions of Thill and Wieder before his. Sackett and Mrs. Lark had waited several hours to file their petitions so to be first on the ballot.

Bjorvik countered by saying there was nothing "legally" wrong with his action.

MRS. LARK points to \$26,000 allotted for tennis courts at London Junior High. She said that

residents approved that amount in a \$586,400 bond referendum in 1964. She questions why, after nearly three years, the courts haven't been built.

Thill says the commissioners have been busy trying to solve the Husky Park problem, and added that the board was negotiating with Wheeling High School for use of their courts.

TOOK OFFICE 5/67





ED KLOCKE



*Glenn Meier*



Park Board President  
Anthony Abruscato



James W.  
Gallagher

# Ross, Nizzi

## Elected Park Commissioners

Robert Ross and Gus Nizzi were elected commissioners of the Wheeling Park District yesterday.

A total of 472 voters cast ballots in the election.

Ross won with an unofficial total of 310 votes and Nizzi had 308. The third candidate, Melvin Peterson, had 248 votes when the ballot counting was completed.

Park board members will canvass the votes and make the election results official at a meeting at 7 p.m. Thursday night.

The board is expected to appoint Nizzi to fill a vacancy on the board until he can be sworn in as an elected commissioner in May.

YESTERDAY'S election was the first time there have been two polling places, one on each side of the district, for a park district election.

Nizzi, who is principal of Eugene Field Elementary School, carried the west side of the village, leading votes cast at Jack London Junior High School with a total of 201.

Ross received 157 votes at the London precinct and Peterson received 156 votes.

Voters who live on the west side of the Soo Line R.R. tracks voted at London.

On the east side of the village at the polling place in the Heritage Park Fieldhouse, Ross led the vote totals with 153 votes. Nizzi had 107 votes at Heritage and Peterson had 92.

Each voter was allowed to vote for two of the three candidates since two seats on the park board were to be filled in the election.

THE VOTE TOTALS were tabulated by 6:45 p.m. at the Heritage Park Fieldhouse where Park District Supt. Ferd Arndt and current commissioners awaited the election results.

At London there were no write-in votes and two ballots were spoiled or defective. At Heritage Park single write in votes were cast for Eugene Sackett (whoal-ready is a commissioner) and for Fred Nelson. One ballot was spoiled at that polling place.

Ross, who led the vote totals by a close margin, has just completed a four-year stint as an appointed commissioner. He



Gus  
Nizzi



Robert  
Ross

has been serving as the board's president this year.

He called the vote a close one and said he was happy about his victory. "It was a good race. I had good competition," he said.

Nizzi said he was very pleased he had won. "I have to learn an awful lot and then carry on the best I can," he said.

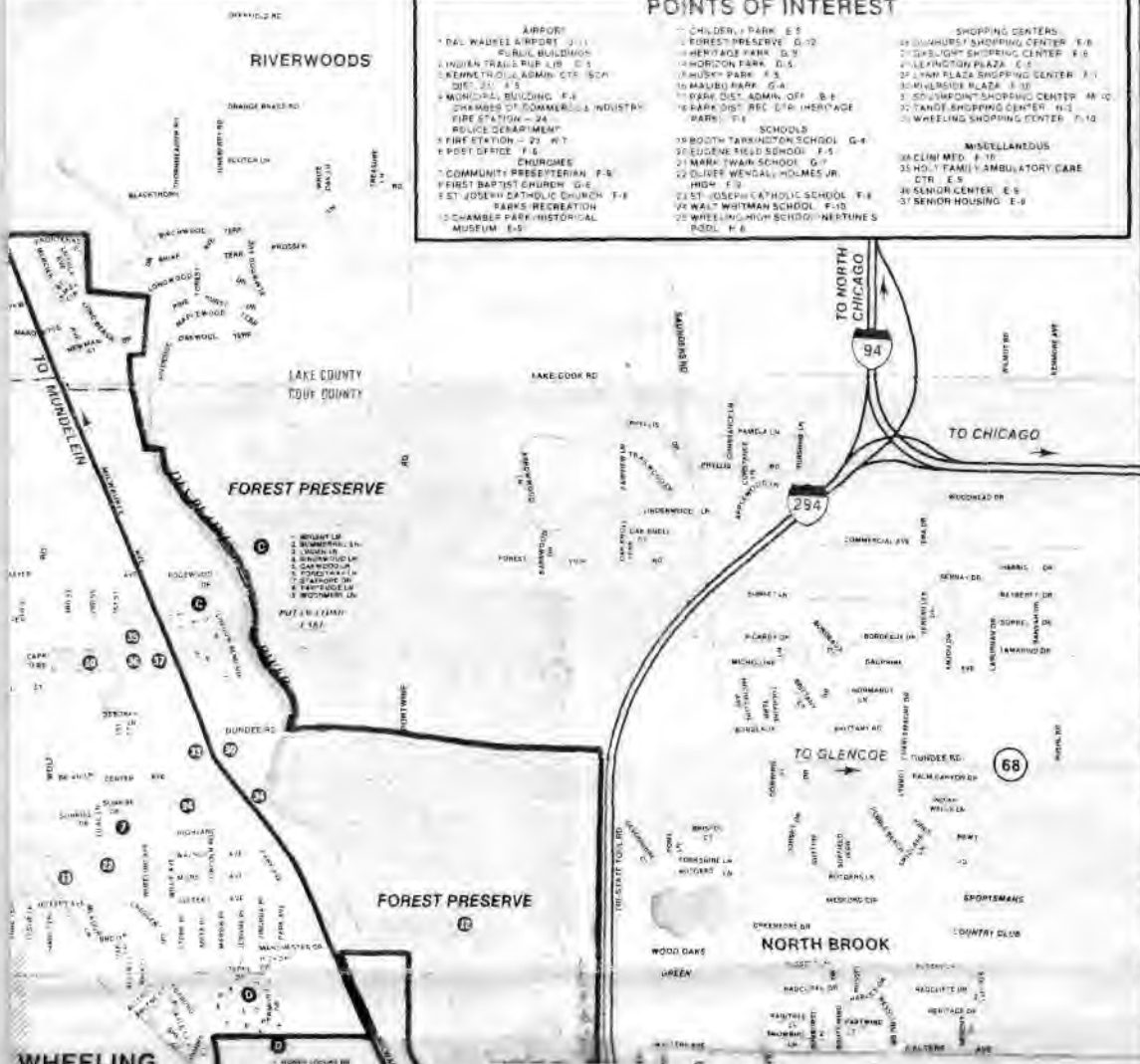
Both candidates said they wanted to thank the residents who had voted for them.

TURNOUT IN yesterday's election was higher than in the 1969 contest when 291 voters went to the polls.

Each of the two new commissioners will serve a six year term on the board.

### POINTS OF INTEREST

|   |  |  |
|---|--|--|
| <b>AIRPORT</b><br>DAL WAHKEE AIRPORT 3-11<br>PUBLIC BUILDINGS<br>HUNTER TRAILS PUB. LIB. 2-5<br>KENNETH COLLEGE ADMIN. BLDG. 3-24<br>QTR. 31 4-5<br>MUNICIPAL BUILDING 4-8<br>OFFICES OF COMMERCIAL INDUSTRIAL FIRE STATION - 24<br>POLICE DEPARTMENT<br>FIRE STATION - 22 4-17<br>POST OFFICE 1-6<br>CHURCHES<br>COMMUNITY REFORMERIAN 4-8<br>FIRST BAPTIST CHURCH 4-6<br>ST. JOSEPH CATHOLIC CHURCH 1-8<br>PARKS RECREATION<br>CHAMBER PARK HISTORICAL MUSEUM 4-5 | CHILDEN'S PARK 4-5<br>FOREST PRESERVE 4-12<br>HERITAGE PARK 4-9<br>HORTON PARK 4-5<br>HUNTER PARK 4-5<br>MAALU PARK 4-4<br>PARK DIST. ADMIN. OFF. 4-2<br>PARK DIST. REC. BLDG. HERITAGE PARK 1-8<br>SCHOOLS<br>BOOTH TARRANT SCHOOL 4-4<br>EUGENE FIELD SCHOOL 4-5<br>MARY TWIN SCHOOL 4-7<br>OLIVER WENDALL HOLMES JR. HIGH 4-12<br>ST. JOSEPH CATHOLIC SCHOOL 1-8<br>VA. WALT WHITMAN SCHOOL 4-12<br>WHEELING HIGH SCHOOL NEPTUNE'S POOL 4-6 | <b>SHOPPING CENTERS</b><br>HUNTERS SHOPPING CENTER 4-8<br>LIGHT SHOPPING CENTER 4-8<br>LEXINGTON PLAZA 4-5<br>PARK PLAZA SHOPPING CENTER 4-11<br>SHILSHIRE PLAZA 4-10<br>SHOPPING SHOPPING CENTER 4-10<br>PARK DIST. REC. BLDG. HERITAGE PARK 1-8<br>WHEELING SHOPPING CENTER 4-12<br><b>MISCELLANEOUS</b><br>CLIM. MTD. 4-10<br>HOLY FAMILY AMBULATORY CARE CTR. 4-5<br>SENIOR CENTER 4-5<br>SENIOR HOUSING 4-5 |
|---|--|--|



**PLANNED UNIT DEVELOPMENT "IN and OUT" Of Wheeling Park District** Updated: 4/23/85

IN Park District                      OUT of Park District

- Cameo Apts.
- Cedar Run
- Lexington Commons
- Whipple Tree
- Aldolorado Villa
- Euclid Ter. Apts.
- Chelsa Cove
- Fairway Greens
- Pine Hill Apts.
- Colonial Hills Apt.
- Ranchero Town Homes
- Shadow Bend
- Tahoe
- Malibu
- Mallard Lake
- Lexington II
- Lakeside Villa
- Foxboro Apts.
- Harmony Village
- Milwaukee Apts.
- Winetree Apts.
- Gladstone Glen
- Lake Run
- Quincy Park
- Birchwood Trace
- Mar Rue Court
- Pinecrest Condos
- Wildwood Apts.
- Town Square Apts.

- Tiffany Courts Apts.
- Forums
- Pheasant Run
- The Oaks of Northfield Apts.
- Plum Creek Condo's
- Willow Park Apts.
- Wimbledon Lake Estates
- Rivertrails Condos
- Willow Woods Condos
- Old Willow Falls Condos
- Marine Courts Condos
- Woodland Creek Apts.
- Windsor Woods Condos
- Covington Manor
- The Arbor Apts.
- Oak Creek Apts.
- Buffalo Creek Apts.
- VIP Apts.
- LeParc Condos
- Park East Town Homes
- Winston Park North
- Park West Town Homes
- Inverarry Town Homes
- Rob Roy Country Club Condo
- Sandpebble Apts.





BREAKING GROUND FOR  
INDOOR POOL



ARBOR DAY-CHAMBER PK.  
COMMISSIONERS KLOCK, LARK, MUELLER  
& SCHNAITMAN



CHAMBER PARK-OLD CHURCH  
COMMISSIONERS ROSS, NIZZI, WILSON  
& SACKETT



COMMISSIONERS KLOCKE, KERR, LARK,  
SEC. HANCOCK & COMM. MUELLER



SUPERINTENDENT PHILLIPS  
COMMISSIONERS GALLAGHER, KLOCKE, LARK



COMMISSIONERS, SCHNAITMANN, MUELLER, MEIER  
LARK (son SCOTT) COMM.KLOCKE



COMMISSIONER DRAKE  
SUPERINTENDENT PHILLIPS



ADMIN.ASST. MUNO  
MRS. KLOCKE  
COMMISSIONER ABRUSCATO

COMM. LARK, SUPT. PHILLIPS, SEC. HANCOCK  
COMM. ROBBERTSON



COMM. GALLAGHER, KLOCKE, LARK  
SUPT. PHILLIPS



COMMISSIONERS SCHNAITMANN, MEIER  
SUPT. PHILLIPS -1978-  
GOLD MEDAL AWARD FOR EXCELLENCE  
IN PARK DISTRICTS







# TO DECIDE ON PARK REFERENDUM

## *Special Meet Of Park Board*

A program toward a bond issue referendum is to be decided upon at a special meeting of the Wheeling Park District Board tonight, Thursday, at 8 p.m. at the village hall.

At a special meeting Sept. 17, the park board tentatively agreed on holding a referendum in December for the purchase and improvement of a 76-acre park site behind St. Joseph Catholic School on Dundee Road.

Short of signing the contract, it also agreed on hiring the Ralph H. Burke firm of Park Ridge to plan the park proposal and help win voter approval of it.

The contract is due to be entered into at tonight's meeting. Included in the bond issue would be both the cost of the land and improvements to it, it is reported. The 76 acres is part of a 160-acre tract owned by

G. D. Searle, and extends from Buffalo Creek to the Soo Line Railroad. Price being negotiated for the land is about \$240,000, it has been previously stated.

**FEE OF THE** Burke firm for work on the referendum would be not to exceed a half of one per cent of the total bond issue, according to Park Atty. Roger Bjorvik, or \$1,750 for a \$300,000 issue.

Should the referendum fail, the firm would offer the same service toward another attempt without charge.

Inherent in the contract is that the firm would have an inside track for being retained to plan and design the park's improvements for a set percentage of the total cost of the improvements according to "credit" provision to be included.

**PROPOSED** contract with Burke specifies that the firm will meet with the park board "as often as necessary...to furnish guidance as to the most effective methods of holding a successful referendum."

It would also be required to examine park sites as to their "best possible uses" and recommend various facilities for them.

Further, the firm would furnish guidance and analyses to help "determine" the size of the bond issue "which will be most likely to pass," and to "assist and advise" in the preparation of "referendum leaflets and flyers."

**THERE HAVE** also been past indications from the park board that a citizens committee would be formed to work on the bond issue.

A mention was made of coordination of a park development program with comprehensive village planning, Bjorvik reported. He said Burke has also advised the park board that it should prepare a comprehensive park development plan, and offered to do it for \$4,200.

Bjorvik said he would not charge the park district for any special legal expenses if the bond issue fails. If it passes, he will receive a percentage of the total amount of the issue, he said.

**ASKED WHAT** this percentage would be, one park board member did not know.

The Burke firm gave a presentation of its background at the Sept. 5 meeting of the park board. Bjorvik said he feels the firm is one of the two best in the nation.

# Winter Programs Expanded by Parks

A date for residents of the Wheeling Park District to place on their calendars is the registration for the winter program, it is announced.

All persons living east of the Soo Line tracks are reminded that Whitman School will be the location of pre-registration Saturday, Oct. 26, from 9 a.m. until noon.

Those who live west of the

Soo Line will register at London Junior High Saturday, Nov. 2, from 9 a.m. until noon.

Again this year a fee of \$1 will be charged for all participants of the regular recreational program. This will not include those adults who are in the adult basketball league.

The years activities have been expanded to include classes in nature study, baton twirling, arts and crafts, physical activity and other related activities.

The program will commence Monday, Nov. 4, and run for two sessions of 10 weeks each. Monday, Wednesday and Friday after school a regular physical fitness program will be conducted at Whitman School.

On Saturday mornings facilities at both London and Whitman will be utilized for children of the village.

Adults will be offered their programs on Monday, Wednesday and Friday evenings at the same sites.

Sundays the regular teen-age basketball program will be offered.

Those adults who are interested in forming a volleyball league are requested to contact Park Supt. E. W. Sackett at L.E. 7-5288 by Nov. 1. Anyone having any questions about the winter program should write the superintendent at the above number. (W)

## \$75 Voted To Beautify Playground

A sum of \$75 for landscaping Meadowbrook Park on Nancy Lane was authorized by the Wheeling Park Board Oct. 3, as well as \$50 for the erection of a small "rustic" sign bearing the name of the newly furnished "tot lot."

Park Supt. Eugene Sackett said the park district should plant a hedge between the park and the residence to the north. He said it would improve "public relations."

HE ALSO indicated some trees are to be planted.

Park Commissioner Clayton Wieder voted against the landscaping appropriation, explaining that he thought it was an expenditure that perhaps should wait until next year.

The sign will be "very good publicity," Sackett said. (W)

But Criticize Idea

# Parks Yield on Insurance Policy

An insurance agreement between Wheeling-Buffalo Grove District 21 School Board and the Wheeling Park Board was approved at the Sept. 26 school board meeting.

However, the park board, although consenting to the school board's "hold harmless" stipulation, objected to the idea.

Park Atty. Roger Bjorvik said that the only party really benefiting is the insurance company. He claimed that, in effect, what is being required is two insurance policies where one would suffice, or double coverage.

THE PARK board would prefer, Bjorvik said, to pay any additional insurance costs the school district would incur in permitting park district activities in the schools and on school grounds.

Bjorvik also insisted that park districts are not liable for personal injuries or damages. But by having to take out this type of insurance, the park board in a sense is taking a step toward

making itself liable, he has argued, or "contracting away our immunity."

School Board Atty. Everett Lewy and Supt. Kenneth Gill argued that the school board is only protecting its employees and officials from possible suits.

Lewy said that school districts, until recent times, were also immune to liability claims. But a court decision changed this. He said the school district should not be liable for claims resulting from park activities.

ROY HAMMOND, park board president, stated that "only financially responsible organizations are penalized" under the "hold harmless" contract agreement which the park district was asked to sign.

The hold harmless agreement was modified somewhat, the specific amount of the park insurance, equal to that of the school district, being designated.

The park board elected to out liability insurance to protect itself because of the hold harmless agreement, Bjorvik said.



NEW SWING SETS at Meadowbrook Park have been getting heavy use. Above children

were making use of the equipment Tuesday.

(W)



# Sees Park Plan Missing

## Overemphasis On Facilities?

12/26/63

by TOM EDWARDS  
Wheeling News Editor

Wheeling has a definite and basic need for parks, and it has already waited too long to start getting them.

But despite this, the park board's proposed plan for solving Wheeling's open space and recreational requirements isn't striking a responsive chord in the village to date. And it seems to be the fault of the plan.

Whereas the village's main need is for park land, the proposed plan puts nearly as much emphasis on "facilities" (buildings and equipment) as it does on land acquisition. And it would tie up the bulk of the park district's limited bonding power for the immediate future, making it difficult for it to purchase still other park sites that become necessary with new development.

Further, the proposed plan calls for spending about \$85,000 to acquire the Chamber of Commerce Park rather than adding more land to that already available to the village's citizenry for recreational use. (The Chamber has already made available its park for intensive general recreation use and has given every indication that it intends to continue doing so.

THE EVIDENT desire of park officials to simply acquire title to the Chamber of Commerce Park seems paradoxical in that

THURS., DEC. 5, 1963

they have been continually espousing cooperative agreements with School District 21. Why not a cooperative agreement with the Chamber of Commerce, too?

Which leads to another question: Is the park board seeking one-way cooperation, or general inter-cooperation between civic and municipal bodies? With its finances all tied up, it certainly won't be able to join with the school district in purchasing joint school-park sites in the future as envisioned in over-all village planning.

Rather, the main request of the park board has been essentially for the school district to help the park district establish itself.

In its joint meeting with the school board Nov. 14, park officials pointed out that \$5,500 is being allotted for the greater development of present school grounds if they may be used as park sites. But there was little said as to how the theory would be carried out.

EACH OF THE school playgrounds is currently being used as a park, also, and all of them

have fairly adequate playground equipment (swings, jungle bars, etc.). What additional equipment do they need for use as parks?

Since the park district also offered to maintain the school sites as part of its proposed "cooperative" program, it might well be asked if the park district actually plans to purchase mowers and tractors rather than playground equipment. How would this reduce duplication, which the park district is espousing, since both the school district and the village already have tractors and mowers and other maintenance equipment?

Park officials have endorsed inter-governmental cooperation and eliminating duplication of efforts but the park district hasn't worked as closely with other village bodies in its basic planning as it has with the school district.

THE PARK district does have to "catch up," as stated by its President Roy Hammand, with the overall development of the village, and perhaps even go ahead. But to catch up, and keep up, it is going to have to work in close liaison with those that control subdivision development, the village board and plan commission. It was the negligence of the village board that put park development behind in the first place, and the school district, in effect, has been required to bear more than its responsibility to fill the gaps in village development.

For less duplication and more cooperation, instead of coming to the school district Nov. 14 with a plan including a \$175,000 building of its own duplicating school facilities, the park district might have offered to supplement equipment in District 21 schools for joint use.

If park officials are interested

in getting banquet facilities, as has been indicated, can't the necessary equipment be installed in the cafeteria room already at London Junior High? Or arrangements made with High School District 214 to use the rather complete restaurant facilities in the new Wheeling High School or one of its other high schools? Besides, every elementary school in Wheeling already has limited facilities for making coffee and warming food.

THERE ARE ALSO about five acres at the rear of the London Junior High site which are in a poorly drained location, and which have been designated for park usage on the village land use plan. However, the park plan recently calls only for purchasing an access easement across the five acres to the junior high school grounds, at a cost of about \$6,000. By acquiring the whole five acres, which should be relatively low in cost, the park district would provide London Junior High with larger grounds and an entrance to the rear of the site off Schoenbeck Road via Lee Street and would demonstrate with action its desire to make cooperation a two-way street.

Additionally, it would demonstrate to the people west of the Soo Line Railroad that the park district intends to take into account all sections of the town. The tokens thrown to the west end of the village by this plan appear slanted to help pass the bond issue referendum when the time comes.

Park officials state that 30 per cent of its proposed \$590,000 plan (the district has a total bonding power of \$610,000) will be forthcoming from the federal government. Probably so—if the plan is accepted by the federal officials. But unless it is

an integral part of an over-all regional development plan, it is reported, the park district is only eligible for 20 per cent assistance for purchase of "open space."

Retiring Park Commissioner Arthur Aronson called for support of the park plan because "there will be time when we can't get any park sites," and the village has to "act now" to get them.

THIS IS generally agreed—but it is not agreed that the present plan accomplishes this. Instead, the present park plan perhaps can be compared to the designs of France's Gen. De Gaulle—it mainly seeks to elevate the park district into a full fledged third position in the local triumvirate of the village, school and park jurisdictions.

The park district started its thinking around what looked to

be a solid addition to the village, a 76-acre major park in the most central and desirable spot in the village available. It still seems like an excellent choice—but the frosting that has been added to it is spoiling the flavor of the cake.

However, the members of the park board seem to be capable individuals, and perhaps they have just been polite to their recently hired planning consultant.

the Target





**PLAYGROUND** equipment at Mark Twain School in Wheeling gets heavy use during recess periods as well as other

times. Wheeling Park District is proposing to assume the responsibility of equipping and maintaining school grounds. (W

# Community Center Proposal Discussed

12-26-63

A civic center on the south side of Dundee Road near Wheeling Road was one of the main topics of discussion at the planning workshop at the Wheeling village hall Wednesday.

Village planning consultant Marwood Rupp suggested a future complex including a new village hall and quarters for a fire department, police department, library, park district and perhaps a post office.

**HE SUGGESTED** that such a community center be planned in conjunction with and as part of the proposed acquisition of 76 acres between Wolf Road and the Soo Line tracks for a major village park.

Rupp opined that another 25 acres adjoining the 76 acres be included in cooperative, united effort.

Asked which governing body should have title to the land on which such a civic center is located, Rupp said probably the park district should be the title holder for all but the actual

space occupied by the buildings if separate ownerships were to be maintained.

**BUT HE SUGGESTED** "joint tenancy" and ownership and perhaps the formation of a public buildings commission in the village to be responsible for a civic center. He noted that such a commission is authorized by state law.

Although parks has been one of the prime topics, Rupp commented that discussions with the park district in connection with village planning "have not been kept up."

There are two reasons for parks, for general recreation needs, and for the preservation of open space, he continued.

Tot lots should be part of a larger park area if possible rather than a small isolated playground, according to Rupp. Isolated tot lots are hard to maintain and police, he said.

**IN ANSWER** to a question, Rupp said he felt that although

the Wheeling Park District needs a headquarters, "schools or similar facilities should be used rather than having duplication of plants."

A civic center should also be laid out so that parking and other facilities are not duplicated, or with each governing body buildings its own facility in the middle of separate land parcels.

If the present Chamber of Commerce Park were "in danger" of reverting back to private use, it should be acquired by the park district, Rupp opined.

And not all of the flood plain has to be developed as park area, but it should generally be preserved as open space by the village board.

**LAND OWNERS** will try to "put pressure on the park district" to either buy or release some tracts reserved on the master development plan for future acquisition by the park district, Rupp warned. He indicated that such eventualities should be anticipated legally and financially.

"Acquisition of land" for parks "should be the first order of business" for the park district, he added.

He noted that some of the development in Buffalo Grove as now planned "would further restrict and cause problems along Buffalo Creek."

**COUNTY LINE** Road will someday be a limited access expressway, Rupp told the gathering.

The planning commission, which sponsored the workshop,

will soon have a general public forum on planning, Commission Chairman William Galow said. There were about 13 people present at one time during the three-hour session.

**THERE WERE SIX** of the nine plan commission members, Mrs. Audrey Christiansen and Eugene Sackett from the park district, Lloyd Kelm of the Chamber of Commerce, Trustee Edwin Smith of the village board, Village Atty. Paul Hamer, and a representative of G. D. Searle, owner of the land proposed for the major park site.

There were no representatives from the school board, library board or zoning board of appeals.

# LETTERS

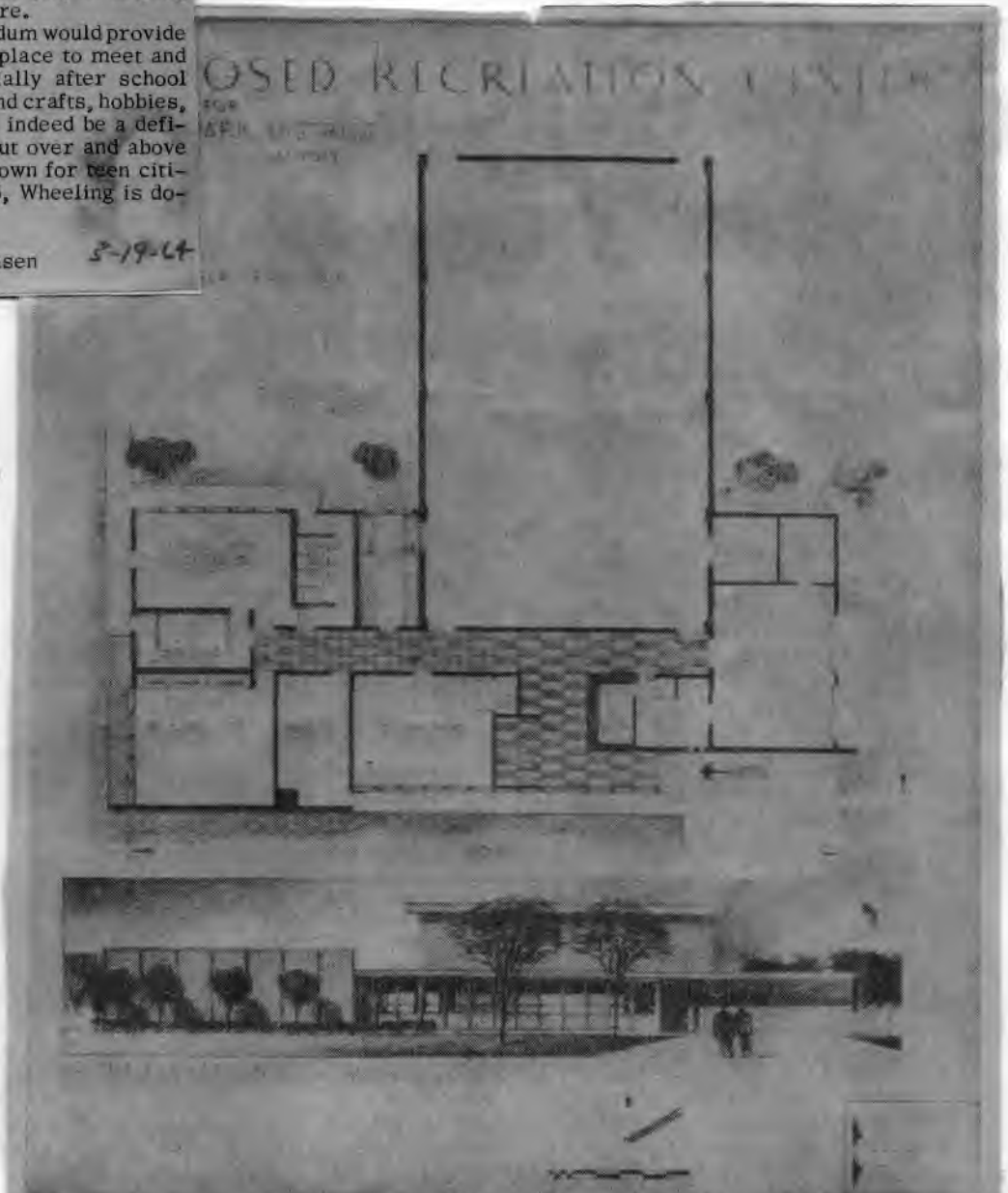
What is Wheeling doing for the teen-agers that are growing by ever increasing numbers? This is the question that the Wheeling Park District Board of Commissioners are trying to answer with the referendum on April 4th.

Plans include a recreational building that will provide space for teen-clubs, dances and related activities for teens. At present, the only planned recreation available to this age group, outside of school hours, is one evening and two afternoons a week of basketball, provided by the Park District. These activities have to take care of 800 teens. The present lack of space does not allow a more extensive and varied program. Recently Dr. Russell Hill, principal of Wheeling High School, Mr. Ted Scanlon, Park Commissioners Audrey Christiansen and Richard Ault, and Supt. Gene Sackett, met to discuss the problem of recreation for teens in Wheeling. Various plans were discussed, but the most recurring item, was the definite roll the Park District should play in helping with the problem, both present and future.

The favorable passage of the referendum would provide the teens of Wheeling with a definite place to meet and play. They would have space, especially after school hours, for basketball, volleyball, arts and crafts, hobbies, etc. The recreational building would indeed be a definite asset to the citizens of the village, but over and above that, it would be a special place in our town for teen citizens. We might be able to answer YES, Wheeling is doing something for their teens.

Mrs. Audrey Christiansen  
Park Commissioner

3-19-64



**FLOOR PLAN** and sketch of the proposed recreation building of the Wheeling Park District is shown above. Construction cost is estimated at about \$167,000, not including engineering and architectural fees. It would be constructed on the proposed 76-acre park, purchase price

of which would be about \$250,000. A referendum vote on the proposed park plan is slated for Saturday, April 4. The park board gives its explanation of the referendum in public statement printed inside this issue of the Herald.

3-20-64

# Park Board Explains Referendum Request

## 4 of 5 Members Okay Statement

3/24/64

(At the request of the Herald, the Wheeling Park District submitted the following public statement to explain its forthcoming bond issue referendum. The statement has the approval of four of the five members of the park board, with member Clayton Wieder dissenting, according to Roger Bjorvik, park board attorney.)

### COMMUNITY RECREATION

The Board of Commissioners of the Wheeling Park Board District believe it is the prime responsibility of the community to plan an adequate recreation program to meet the needs of all its residents, regardless of age or economic status.

It believes that recreation opportunities, provided adequately and attractively throughout the year, contribute to the health, safety, mental development and social adjustment of its citizens.

The benefits are many and varied. Economically, the community prospers because adequate recreation facilities have proved to be an important factor in attracting new industry. Mutual benefits result when a firm working agreement between park district and school district permits the development and maintenance of recreation facilities on school property. The community in general benefits from such an arrangement.

Finally, and perhaps most im-

portant, the park board believes that wholesome recreation opportunity is a powerful influence in the prevention of delinquency. The increasing number of teenage children in the community makes it imperative that additional recreational programs and facilities be provided for this age group. This is a positive approach to the problem of delinquency and will go a long way toward preventing this situation from developing in our community.

### THE REFERENDUM

For the past two years the board of commissioners has given careful consideration to a land acquisition and park development program which it feels is urgently needed to adequately serve the residents of this community. To this end the board, with the aid of professional park planners, has prepared a park improvements program to be presented for voter approval by referendum April 4.

### RECOMMENDED STANDARDS

Recommended and accepted standards provide that one acre of park-recreation land be provided for each 100 persons in the community. On the basis of the present Wheeling population, approximately 90 acres of park land are presently needed. On the basis of a 10 year popu-

lation projection, approximately 170 acres of recreation area should be provided.

### PRESENT

#### RECREATION AREAS

Present recreation areas of the Wheeling Park District consist of Meadowbrook Park, a small playlot donated by a developer to the village for recreational purposes, and Dunhurst Park, donated for library purposes and leased to the park district for use as a neighborhood playlot. Together, these playlots contain less than one acre.

Other publicly owned land in the community consists of about 28 acres of school grounds, which are available for recreation purposes.

### PARK-SCHOOL CONCEPT

The Wheeling Park District enjoys excellent cooperation from the school district, and conducts its present program in the public schools. The winter program is conducted at Whitman, London and Mark Twain Schools, with an approximate attendance of 10,000. The 1963 summer program was conducted at Whitman, London, Mark Twain and Sandburg Schools, with a total attendance of 6,000.

A proposed agreement between the park board and school board strengthens the park-school concept in Wheeling. Under this agreement, the park district will improve the school grounds for recreational purposes, and the school district, space permitting, will permit continued use of its indoor facilities for supervised recreational purposes. The interests of the Wheeling Athletic Association in conducting its baseball program are also protected under this agreement.

### LAND ACQUISITION

The park district considers it extremely urgent to acquire open space land before such land becomes unavailable for park-recreation development. Land is being converted to urban uses at a rapidly increasing rate. In the face of this, effort must be made now to set aside land for park, playground and general outdoor recreation purposes.

Further development of school sites by the park district as provided in the joint park-school agreement, including existing schools and new school sites at Hollywood Ridge and at Wolf Road, will improve for recreational use the approximately 28 acres of publicly owned land in Wheeling.

In addition to the school sites, the park district proposes to acquire and develop neighborhood seven acres in the vicinity of Holland Subdivision and five acres adjoining Jack London Junior High. Also, the Chamber of Commerce willing, the park board would like to develop a neighborhood park on the Chamber of Commerce Park site on Wolf Road.

These sites approximate 17 acres in area. Together with the school sites, approximately 45 acres will thus be available for neighborhood park development.

### COMMUNITY PARK

Finally, the park district proposes to acquire approximately 76 acres of land identified as the Searle tract, lying south of Dundee Road between the Soo Railroad on the west and Wolf Road on the east. A unique opportunity is presented in this tract of land. It is centrally located in the community, is well suited for recreational development to serve as a large community park, and is offered to the park district at a price substantially less than the value placed upon it by the park district-school district appraiser.

Effort has been made to coordinate the development of this park with the proposed civic center of the Village of Wheeling, yet retaining enough flexibility to permit this development to proceed independently of the civic center plan. The generous size of the Searle tract permits a variety of facilities to serve residents of all ages. The proposed development would include baseball and softball fields, playgrounds and toilets, an ice skating rink, tennis and basketball courts, horse shoe courts, handball courts, picnic area and open space game area, a nature trail area, parking lots, and a community recreation building.

Acquisition of the community park, the neighborhood parks, plus the school sites, will provide Wheeling with a total of approximately 120 acres of park-recreation area, meeting the recommended area based upon the present population and approaching the recommended area based upon projected population data.

In choosing the land to be acquired, the park board has been guided by the recommendations of the Village planning agencies. All the areas to be acquired and improved by the park district have been designated as public lands and open space land by the Wheeling Plan Commission and the Village Board of Trustees.



HERITAGE PARK RECREATION CENTER  
& ADMINISTRATION BUILDING

















RECREATION PROGRAMS



100 2W TOP





1971





1991







## Ice Skating Weather

WHEELING PARK DISTRICT  
OFFICE OF THE SUPERINTEN-  
DENT

The ice skating rink is open and the patronage has been very good. We have been having trouble keeping water in the rink and have found that there is a lot of sand as a base, which is not very good for holding water. However, we have been fortunate enough to pump water for the rink from the creek behind us, therefore keeping costs down. Skating hours are as follows:

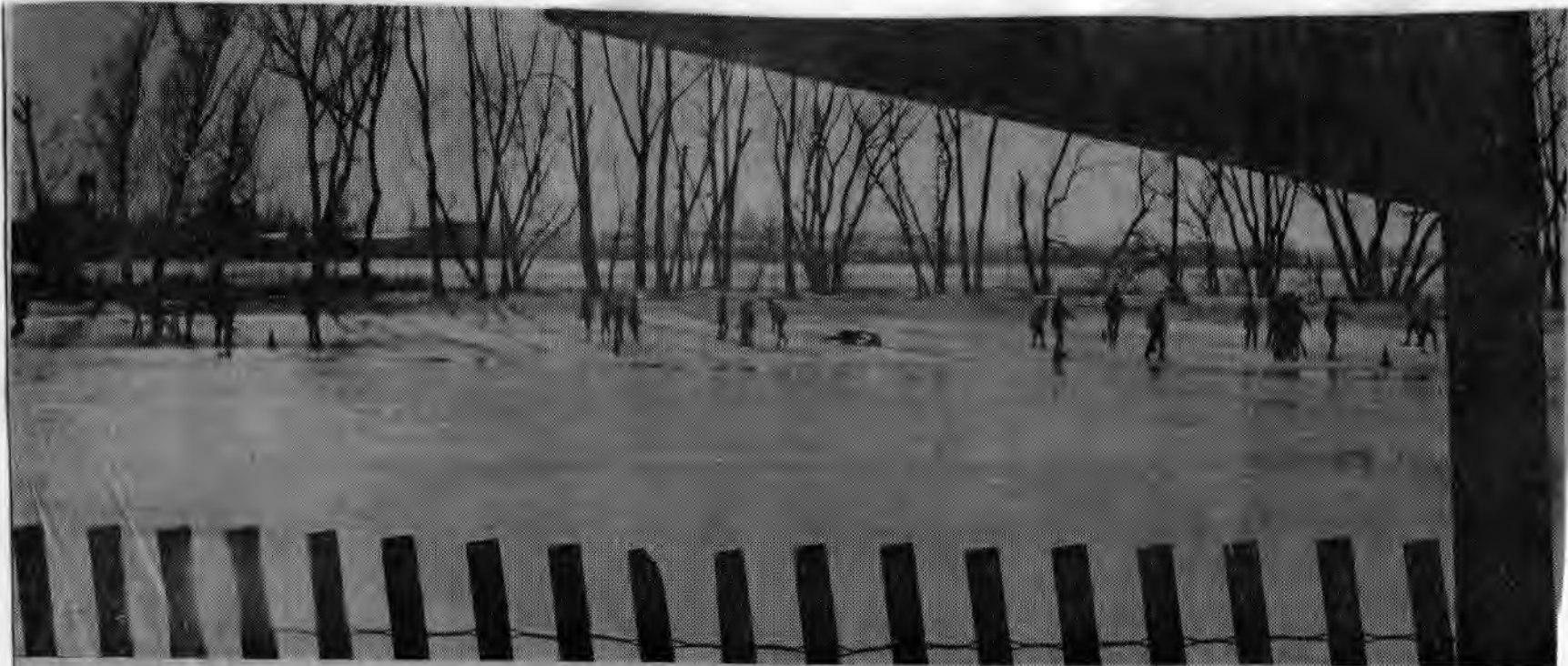
Weekdays -- 4:00 - 6:00 p.m.  
and 7:00 - 9:00 p.m.

Weekends and Holidays -- 1:00  
to 6:00 p.m. and 7:00 - 9:00 p.m.

Skating fees are as follows:  
Daily -- 10¢ to age 15; 25¢ age  
15 and over.

Memberships -- \$1.00 per per-  
son; \$2.50 per family.

Don't forget the Winter-Spring  
Program starting January 16th.  
Registrations are now being re-  
ceived at Heritage Park. Please  
sign up early.



WINTER FUN BEGAN in Wheeling last week as the Park District opened its new ice skating rink back of the \$190,000 Heritage Park building on South Wolf Road. Many youngsters spent the last

part of their Christmas vacation testing the ice. If it got too cold on the rink they would warm up in the "warming house" at the northwest corner

of the recreation building. Though the winter sun hangs low in the sky, it offers little warmth to the skaters. (Staff Photo)

Feb 16  
1967

# 3-Acre Retention Basin Is Proposed at Husky

Wheeling's Park Board has reviewed plans that would transform the Husky Park swamp into a lush three-acre lake, suitable for fishing and boating. At the same time it would serve as a million and a half gallon retention pond to help solve the area's flooding woes.

Both Trustees Pete Egan and Frank Wojek indicated that they were anxious to get the flooding problems at Husky solved.

Late last year Trustee John Koepfen Jr. vigorously started working with the parks to solve the flooding woes in the park area. The park board sought financial help in the project.

To create the lake, 25,000 cubic feet of earth must be removed. This dirt would be then used to build up the slope along the perimeter.

The problem of what to do with the excess storm water draining into the park had long been a baffling one. It had been suggested that mechanical pumps would have to be installed to force the water up hill and out of the park. However, Arndt explained that the weight of the added water pushing down would act as the needed force.

ARNDT SAID that he had written to the county explaining that \$20,000 from them would be enough to handle the project. "If we only get \$10,000 we will be ahead of the game."

Board member Audrey Christiansen urged that immediate steps be taken to get the project out of the talk stage and into action. "Perhaps what you should do is set up a definite date when you want to start digging and then work backwards. Otherwise this thing will drag on and on from one meeting to another."

tees tentatively agreed to meet with the park board at 8 p.m. next Tuesday at the Heritage Park Recreation Building. However, the village board indicated that it would like to invite other interested governmental units, such as the township, Buffalo Grove, and the Wheeling Drainage District to the meeting.

Supt. Ferdinand Arndt presented the study that called for digging a three-acre five-foot deep permanent retention basin. He said that the lake would be twice as deep and hold three million gallons after heavy rains.

This excess water could be then fed off through gravity to the drain tiles on Anthony Drive. A water control valve would regulate the run-off flow. "As we see, the problem has been boiled down to simply one of control," he said.

The park board has requested a meeting with the village board to discuss the plan, including the possibility of finally annexing the park into the village. MONDAY WHEELING trus-

## Land Is Annexed Near Husky, Delay Zoning

Wheeling annexed 10 acres at its south edge Monday night, but then warned the developer that no action would be taken on rezoning the property until flooding problems in nearby Husky Park were solved. The land, called Howard Highlands, is owned by Chicago Developer Roy Lichter. It was annexed R-1 single family, but Lichter wants it reclassified to R-3 single family.

and the park district will meet next Tuesday in an effort to solve the flooding problems. Residents opposed the annexation and rezoning. Trustee Ira A. Bird made it clear that he would vote on the annexation, but he said he would not vote on the rezoning until the flooding problem was solved. Trustee John Koepfen Jr., who could not attend the Monday meeting, urged that the board delay approving the annexation. In the letter Koepfen said, "I strongly urge that this item be tabled until Husky Park becomes a retention basin

(lake) and then bring it back for further discussion." Bird said he did not think the board was going against Koepfen's wishes. "Nothing on this development can be started until it's rezoned to R-3; therefore we are not going against his (Koepfen's) wishes." THE ZONING Board of Appeals put its stamp of approval on Lichter's request last Friday night. Bird said the annexation would not jeopardize Koepfen's concern. Mrs. Shirley Wilson, 1024 Anthony Road, which is near Husky, asked the board if the swampy park could take any more water. Village Pres. Ted C. Scanton said there wasn't much more land to the south that would drain into the area. He added that most of the land south will drain to that direction, not north to the park.

THURSDAY, JAN. 5, 1967

## Seek Community Help

# Eye Beautification Plan

A park board member has called for an intensive beautification program for Wheeling.

Mrs. Audrey Christensen says she is doing some preliminary work which will "get a community-backed beautification project started."

Cleaning up along Dundee Road, one of the village's main

thoroughfares, would be a start in the right direction, she said. She pointed to a service station on the corner of Wolf and Dundee, where considerable landscaping had been done after the street was widened to four lanes.

PERHAPS OTHERS along the road could do similar things to

make the drive pretty, Mrs. Christensen said.

She said she believed it was the responsibility of the park district to get a beautification project started and with interested civic organization and cooperation of governmental bodies could be completed.

The building and grounds

committee of the park district and Mrs. Christensen will start working on a proposed beautification program. They they will check various civic and governmental groups to see if there is an interest in working together to make Wheeling more attractive.

Com. Christensen also called for a neighborhood project whereby residents would take more pride in keeping their homes and surrounding areas cleaner.

Mrs. Christensen said there should be a rejuvenation of a "Nature Trail in Wheeling." The Wheeling Community Council suggested that Buffalo Creek in the village be preserved as a nature area.

THE COUNCIL SAID the flood plain along the creek, which winds through Wheeling, should be left in its natural state. Paths for pedestrians, as well as another for bicycles could be built along the trail.

The project would provide the village with corridors of green and institute a system of pedestrian paths.

The Wheeling Village Board gave the project a favorable nod in December 1965.

The Community Council was to engender citizen interest and support for the creek parkway. This was started in early 1966, but has been shuffled aside by the council.

THE PARK BOARD directed its representative to the Community Council, Bernard Erlin, to check the status of the nature trail at its meeting which was to be held Tuesday night.

# Parks Seeking County Aid to Halt Flooding

The Wheeling Park District is seeking financial aid from Cook County to build a retention basin in Husky Park.

Park Supt. Ferdinand Arndt said in a report to the district board last week he had written to Com. Floyd Fuller of Des Plaines asking that \$20,000 be set aside in the county's budget for the project.

According to Arndt's projected figures, excavating would cost \$10,000, landscaping \$5,000 and engineering, valves and pumping facilities \$5,000.

THE PARK DISTRICT wants to build a two to 3½-acre retention lake on the five-acre park behind Jack London Junior High School.

Arndt also sought and got a statement from District 21 which said it did not oppose the building of the retention lake.

In related action, Village Trustee John Koeppen, Jr., sent a letter to the county which had about 15 signatures of Husky Park area residents. The letter approved of the retention basin project.

The park district also has asked financial cooperation with the Village of Wheeling on the project. In mid-December the proposal was presented to the board of trustees.

Village Engr. Thomas Moody has approved the retention basin, and says it would solve the present flooding problems in the park area.

Koeppen said he and Public Works Supt. Angelo D. Ventrella will take soil borings in the park today to determine water table levels.

SUPPOSEDLY THEN the village, park district and all

interested citizens would meet on the proposal. At this meeting financing would be worked out.

The park district could either take bids before or after the meeting. Park Board Atty. Roger Bjorvik said last week he believed the district should seek bids first, then meet jointly with the village to discuss the financing.

Village trustees report that \$20,000 has been budgeted for tiling which would lead from west of the flooded park to the retention basin.

Koeppen says this tiling would be worthless if the retention basin is not built.

Koeppen said in his letter, which accompanied the 15 signatures, he asked for whatever assistance the county could give. No particular amount of money was mentioned.



# Permanent Vets' Memorial Planned at Heritage Park

1-19-67

The erection of a permanent memorial to the veterans of Wheeling has been announced by the Public Relations Commission of Wheeling. It will be built on a site provided by the Wheeling Park District in the northwest section of the Heritage Park Building grounds.

The simple marble monument is 9'4" in height and will bear the inscription, "In grateful memory of the people of Wheeling who served in all wars."

"THOUGH its simplicity gives it a contemporary appearance,

the design dates back to the memorials of the ancient Greeks to honor their warriors," explained Chairman Eugene Hicks.

The concept of establishing a suitable memorial in Wheeling was initiated by Hicks and will be executed with the cooperation of the local veterans organizations. It will be financed solely by contributions.

"We want this to be a community endeavor," said Hicks. "We hope that every citizen, organization and business will take part."

CONTRIBUTIONS will be handled by the Wheeling State Bank and should be addressed to Memorial Fund, Wheeling State Bank, Wheeling. Hicks, whose proposal was favorably received in recent appearances before the veterans organizations, will speak to any group interested in further details. He may be contacted through the Public Relations Commission, Village Hall.

Formal dedication of the memorial will be held in conjunction with the Memorial Day parade and services in May.

## Memorial Site Is Decided

Feb 16 1967

Wheeling's proposed veteran's monument will be located in the southwest section of Heritage Park, west of the parking lot and east of Buffalo Creek.

The park board unanimously agreed on the site after hearing Eugene Hicks of Wheeling's Public Relations Commission report that the nine-foot-four-inch monument had been ordered and should be in place for Memorial Day.

Hicks said that Heritage Park would provide an ideal termination point for parades and would be easily accessible for service.

He also said that the American Legion had agreed to furnish concrete benches once the monument was in place. The \$3,600 cost of the memorial has been raised by donations from private organizations throughout the village.

Hicks will now meet with the park board's building and grounds committee to determine the exact location.

## Plan Plants At Soldier Monument

March 18 67

The Wednesday night meeting of the Wheeling Beautification Committee centered on the project to put plants around the Soldier Memorial Monument.

According to Dolores Stephan, secretary to the committee, the planting will be done in three phases: grouping evergreens to give the monument a background, flowers to be placed on both sides of the memorial, and construction of a path leading up to the monument.

Members of the American Legion, Wheeling Garden Club and Women's Auxiliary of the Wheeling Athletic Club have agreed to participate in the project.

Members of the committee also reported that the Beautification slide program was presented to the Wheeling Athletic Club on Feb. 20.

# To Honor Veterans

May 21, 1967



LOWERING THE LAST SECTION on the veteran's memorial are workmen from the Simpson Granite Works of Libertyville. The job took seven hours to complete. Located at the southwest corner of Heritage Park, the \$3,000 gray granite memorial is dedicated to all Wheeling men who have served in the wars.

Dedication of the new \$3,000 Veterans Memorial at Heritage Park will highlight the Wheeling Memorial Day Parade.

Ceremonies will begin about 9:45 a.m. at the park following the parade.

Launching off at 9 a.m. from the Amvets Hall on S. Milwaukee Avenue, marchers will parade north to Dundee Road, west to Wolf Road and south to Heritage Park.

THE WHEELING High School Band, a Navy Band, color guards and scout troops will form the main line-up for the parade.

Frank Rainey, parade master, urges other persons or groups who wish to participate in the parade to contact him at the Amvets Hall.

Speaking at dedication ceremonies will be Thomas Russell, junior vice commander of the Illinois V.F.W. The Jack London Junior High Band will furnish the music.

Constructed at the southwest corner of Heritage Park, the monument was erected early in May. The five-sectional stone monument is of gray granite. It is inscribed with the words "In honor of Wheeling veterans" and "In grateful memory of the people of Wheeling who served in all wars."



CLIMAXING MEMORIAL DAY activities was the unveiling of Wheeling's monument, dedicated to veterans of all the wars. The grey granite memorial stands at the southwest

corner of Heritage Park. The \$3,000 monument was erected through contributions of local citizens and organizations. (Staff Photo)

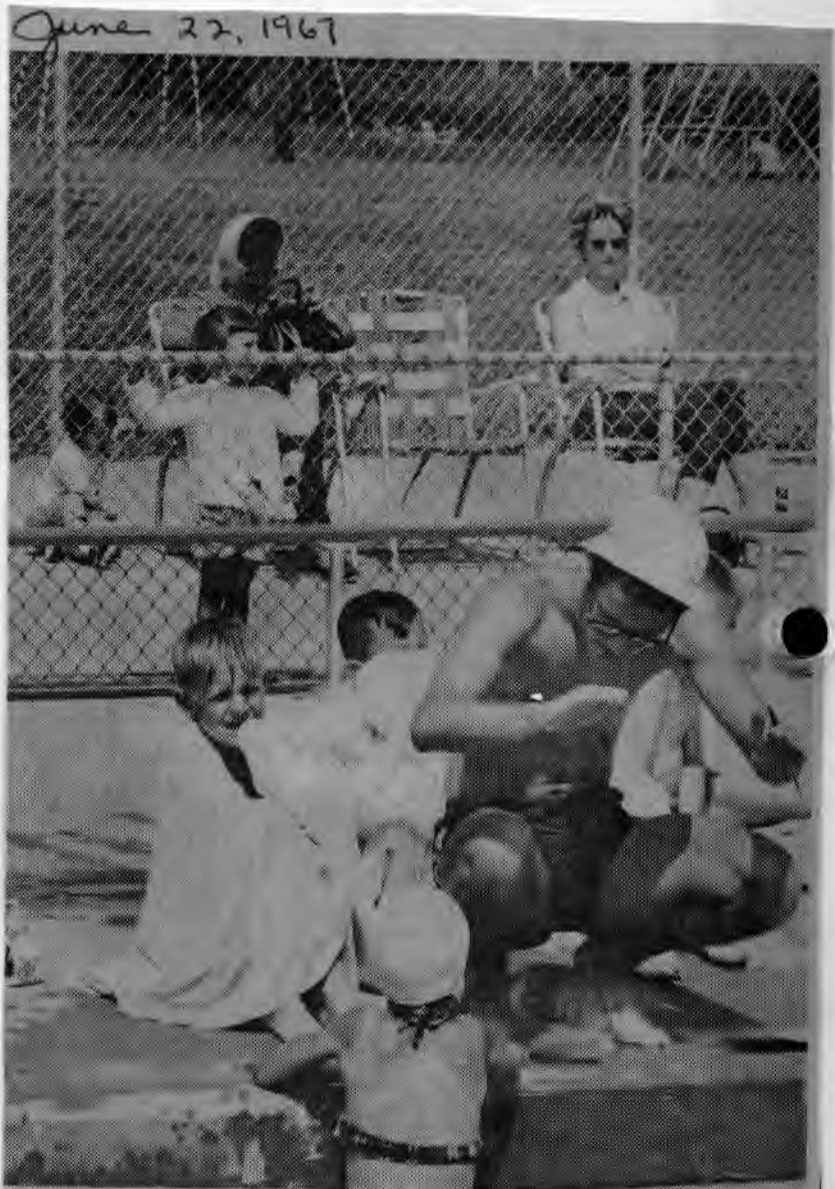
June 2, 1967





**IT'S A LONG, LONG WAY DOWN** for this bass clarinet player during Wheeling Park District's first outdoor band concert Tuesday. Conducted by assistant director Doug Peterson, the Wheeling High School Band entertained spectators at the Dunhurst Shopping Center. Band members played scores from George Gershwin's "Strike Up the Band," and "Hello Dolly." Two more concerts are scheduled during the summer.

June 16, 1967



Wheeling day, the hind the fence, this is the first of many days this summer they will occupy the same chairs, watching their children develop swimming skills. (Staff Photos)



HOW VETERANS MEMORIAL  
WAS ERECTED  
AT HERITAGE PARK  
WHEELING, ILLINOIS



Here workmen place the base of Wheeling's Veterans Memorial on a foundation of seven square yards of solid concrete, the start of the five sections needed for completion.



After the center piece was in place workmen started on the pillars. Here it would seem that a workman is holding up the load all on his own, actually it is being held in place by cables and booms.



Now the final piece is being lowered across the two pillars and the Memorial will be complete. Cut from the world's finest available granite, the Memorial will stand majestically as a symbol for those who so gallantly served.

# APPROVE DETENTION BASIN WORK

Work can begin right away on Wheeling's proposed Heritage Park retention basin, Metropolitan Sanitary District acting chief engineer Frank Dalton said yesterday.

Final approval of a joint construction project for the basin with the MSD contributing \$180,000, or two-thirds of the construction cost if less, was given by the MSD board yesterday.

The contract calls for construction of the basin by the MSD which lets bids on the contracting. Despite other MSD budget problems, the money is included in the 1969 construction program and is available immediately.

MSD FUNDS cannot, however, be used for any recreational aspects of the basin.

Negotiations for the joint con-

struction program have been going on since November, 1968 between the village, Wheeling Park District, and the MSD.

Village Pres. Ted C. Scanlon called the MSD approval of the agreement "wonderful."

"We've been holding our breath," Scanlon said. The village has okayed the agreement numerous times since November inserting various MSD amendments each time.

"WE'RE READY to go," Scanlon said about construction of the basin. The actual starting date will depend on Harza Engineering, the village's engineers in the project, and the MSD.

The village's portion of funds for the project will come from a bond referendum held last spring.



1972

WAR MEMORIAL - Heritage Park



MOVING OF GARAGE AT HP.  
BURNED DURING NIGHT



RETENTION POND  
HORIZON PARK



BUILDING SKI HILL  
HERITAGE PK.

1970





RETENTION POND\_HP.



1972



all sink

1972

FEB. 14, 1968

# PARK BOARD'S TURN ON FLOOD PROBLEM

Wheeling Park commissions are expected to take another plunge into old, familiar flooding problems.

But, this time, a new splash is expected.

The park board will explore the pros and cons of several new flood control projects recently suggested by the Harza Engineering Co., a consultant to the village of Wheeling.

Three of Harza's four projects involve land which the park district owns.

Discussion about the projects will be held during the park board's regular meeting Thursday at Heritage Park. On hand to answer questions will be Harza representative John Crane and Wheeling trustee Dan Owen. Discussion is expected to begin at about 9 p.m.

**MADE PUBLIC** last week at a village board meeting, Harza's preliminary report suggests digging retention basins at the ice rink at Heritage Park, at Husky Park and enlarging a basin at the southwest corner of Heritage Park to 20 acres.

A fourth project involves deepening and widening of the Wheeling Drainage Ditch channel, part of which winds through Heritage Park.

Already the village board has given its approval to the ice rink basin and has hired Harza to begin working on engineering plans for the project.

But that approval hinges on an okay from the park board which owns the skating rink site.

**AT THURSDAY'S** meeting park commissioners will be asking questions involving the details of all three projects, among them:

—The depth of the proposed retention basins. Harza has suggested a two-foot depth for the 20-acre Heritage Park basin

while the park board wants to use it as a recreational spot for fishing, boating and other water activities.

—The maintenance required for retention basins. Questions have been raised over possible health hazards created from using the ice rink site to temporarily hold storm water. Trash and silt flowing into the basin would remain after the water drained away.

**OTHER QUESTIONS** posed are who would pay for maintaining the basin since the village would benefit from the water retention and the park district from the skating.

How porous is the ground at the rink? Could it hold storm water efficiently?

What is the financial liability of the park district in the three projects? The village board has indicated it would pay to construct the ice rink basin (about \$22,000). But what will the cost be to the park district in the larger Heritage Park basin and the Husky Park basin?

At the Husky Park site, will there be high land along the edge which could be used for recreation? Will water stay in the basin permanently or just during heavy floods? Should the park district sell the entire five-acre site to the village?

All these, and other questions, are expected to be asked at the meeting as park commissioners try to weigh the benefits of the projects.

## Heritage Basin Okayed

3-8-68

Meeting as a committee of the whole last Tuesday night, the Wheeling Park Board decided to proceed with current plans to create a retention basin at Heritage Park and directed Park Supt. Ferdinand Arndt to engage a professional engineer to evaluate plans from Harza Engineering Co.

Dr. John Scheafer, a recognized authority on retention basins and similar engineering, has been hired by the park district and will begin his study of the proposed plans as soon as they are received by the park office.

**DR. SCHEAFER** has been associated with the Northeast Metropolitan Sanitary District and has worked in similar capacities in other communities.

Preliminary plans for the Hermitage Park retention basin call for a saucer-shaped pool extending over an acre of ground. The basin could be formed by inserting a layer of water-retaining clay beneath layer of gravel.

Arndt, describing the basin, said it would not be visible because the basin would "feather out" at the edges and only a shallow sheet of water would be seen.

Initial plans also call for a tile to be placed in the middle of the basin with a gate to regulate the flow of water out of the retention basin once the level of water in the creek declines.



1970



1971



1971

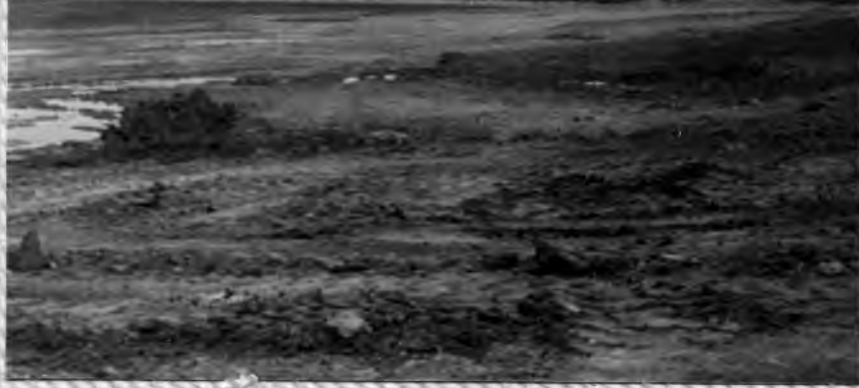


Heritage

1971









Heritage Park Retention Basin  
Nicknamed "Yecca Flats"







HERITAGE PARK  
1986



HERITAGE PARK  
1986











SNO-  
CONES

WHEELING  
PARK  
DISTRICT

DEBBIE  
STECKER



Ed Lockwood  
Director of Finance



Parades & Programs





AUDREY CHRISTENSEN



# Parks Say Jet at Tot Lot Is 'Tremendous Success'

4-30-64

Addition of the obsolete Sabre Jet airplane to the tot lot on Nancy Lane in Wheeling's Meadowbrook subdivision was termed a "tremendous success" in a written statement issued in behalf of the Wheeling Park District this week.

Meadowbrook parents have been reported somewhat upset by the placing of the plane in the park as a plaything following some serious mishaps to children while playing on it after it first arrived.

"Needless to say, the majority of the children have been enjoying the plane tremendously," it is asserted in the statement.

"Some children, unfortunately, are never taught to appreciate anything. They only know how to destroy and make life miserable for the others.

THIS IS A public piece of property and the responsibility of everyone for preserving its appearance," the statement continues. "We would like to suggest that parents supervise their children's trips to the plane, teach them to appreciate it and how to play on it.

"It is not recommended they slide off the nose; this has already been tried unsuccessfully by a few children, resulting in broken arms.

"With correct instructions and supervision from parents, this plane affords our children something quite unique and different to play on.

"In fact, it has been such a tremendous success, that the

park district would like to consider further acquisition of other playground articles such as a fire engine, boats and locomotives."

SAFETY precautions that have been taken were emphasized: "Before the Navy released the plane to the park district, they made sure all the parts were bolted securely. The front

and the back opening have been covered and welded securely into place.

"The park district has also taken the additional precaution of chaining the jet to the ground."

Besides being chained down so that children could not rock it, sand has been spread around the plane to soften falls, it was reported.

Two children have broken an arm while playing on the plane, it was reported last week. One Meadowbrook parent said he wished someone would "fly that plane out of there."

The park district statement was issued by Mrs. Audrey Christiansen, one of the five members of the park board.

## Defends Plane In Park

Letter to the Editor:

On April 15, 1964, the Wheeling Park District was very fortunate in securing an obsolete jet fighter from the Glenview Naval Air Base. It was quite a thrill to see this plane transported from Glenview to a temporary placement in Meadowbrook Park. One obstacle was a very old railroad underpass on Shermer Road. Through manual manipulation the plane was swung from side to side till it cleared the support beams of the underpass. It finally made journey's end at Meadowbrook Park and was immediately set upon by children of the area to explore.

Before the Navy released the plane to the Park District, they made sure all parts were bolted securely, the front and back opening have been covered and welded securely into place.

The Park District has also taken the additional precaution of chaining the jet to the ground. Needless to say the majority of the children have been enjoying the plane tremendously. Some children unfortunately, are never taught to appreciate anything. They only know how to destroy and make life miserable for the others. This is a public piece of property and the responsibility of everyone for preserving its appearance.

We would like to suggest that parents supervise their children's trips to the plane, teach them to appreciate it, and how to play on it. It is not recommended they slide off the nose, this has already been tried unsuccessfully by a few children, resulting in broken arms. With correct instructions and supervision from parents, this plane affords our children something quite unique and different to play on. In fact it has been such a tremendous success, that the park district would like to consider further acquisition of other unusual playground articles such as a fire-engine, boats and locomotives.

Our thanks to the men and officers at Glenview Naval Air Station for their help in securing and transporting this jet to our park.

Mrs. Audrey Christiansen  
Park Commissioner

## Jet Fighter Plane Added To Tot Lot

An F-86 Sabre Jet airplane is to be added to the equipment of the Wheeling Park District this week, it was announced by Park Supt. Eugene Sackett.

Sackett said the obsolete fighter plane will be put in the park district's tot lot on Nancy Lane in Meadowbrook subdivision for the time being.

HE SAID THAT after the district acquires and develops its proposed 76-acre park between Wolf Road and the Soo Line Railroad south of Dundee Road, the plane will be put in that park.

The F-86 was used in the Korean War by the Air Force and is now being given to armed forces of allies of the U.S.

Children will be allowed to clamber over and play in the plane being given to the park district, Sackett said. It is coming from Glenview Naval Air Station.

4-23-64



Standing alongside AFIE given to the Wheeling, Park District by USNAS Glenview, Ill. are Capt. Marcus L. Lowe Jr. Co NAS Glenview; and Mrs. Audrey Christiansen, Wheeling Park Commissioner.



## Jet Fighter in Park

Residents of the Wheeling Park District will see a new addition to their parks Thursday morning when they drive by Meadowbrook Park. This attraction will be a static display of the famous Korean jet fighter airplane known as the "Sabre Jet".

Through the cooperation of Naval authorities of the Glenview Naval Air Station and the efforts of Park Superintendent Gene Sackett, a Marine Corps reservist, this airplane will be temporarily housed at the Meadowbrook site, until the new major park is purchased and an area set aside for displays such as this. 4-16-64



"WE PAY FOR A single fighter plane with a half a million bushels of wheat . . . Is there no other way this world can live?" — Dwight D. Eisenhower. A mute "statue" of war and its costs as well as man's ingenuity was, for better or worse, added to the village scene April 15 by the Wheeling Park District in the form of a obsolete Sabre Jet fighter plane. It was put temporarily in the Meadowbrook tot lot on Nancy Lane as a plaything for children, and is

later to be moved to the park district's proposed 76-acre park southwest of Wolf and Dundee Roads. As of Tuesday two children had incurred broken arms while playing on the plane, another had incurred a laceration on his forehead, and two Meadowbrook fathers are going to court as a result of an argument they had following a dispute between their sons. While playing on the plane. (Staff photo)